



# Bell Block Spatial Plan Engagement Plan

March 2026



Te Kaunihera-ā-Rohe o Ngāmotu  
**New Plymouth  
District Council**

# Contents



Introduction .....	2
Bell Block Spatial Plan Engagement Approach.....	3
How We Will Engage .....	3
Wider District Engagement.....	3
Engagement Requirements .....	3
Messaging and Communications .....	4
Key Project Messaging .....	4
Communications Strategy.....	5
Project Focus Area .....	6
Engagement Framework .....	7
Engagement Types.....	7
How will we engage? .....	8
Bell Block Spatial Plan Citizens Panel .....	9
Project Timeframes and Engagement .....	10
Project Timeline.....	10
Engagement Timeline and Activities.....	11
Appendices .....	12
Appendix 1: Stakeholder Mapping.....	13
Appendix 2: Community Engagement .....	17
Appendix 3: Bell Block Spatial Plan Citizens Panel.....	18
Appendix 4: Bell Block Spatial Plan Project Partners.....	19



# Introduction

New Plymouth District Council is creating a plan to guide how Bell Block grows and develops over the next 30+ years – The Bell Block Spatial Plan.

It will outline the steps needed to secure funding, support future investment, and clearly show the direction the community is heading.

The Bell Block Spatial Plan is being completed in partnership with Puketapu-Bell Block Community Board and Puketapu Hapū. For the plan to succeed, it must be shaped and supported by the people of Bell Block. The actions that come from it need to be realistic, build momentum, and reflect the priorities of those who live, work, and spend time in the area.

This Engagement Plan explains how we will work with the community throughout the process. Its main goal is to ensure the Spatial Plan genuinely reflects local voices and gives those implementing the Plan the information they need to bring the long-term vision to life.

This document is a living framework and will be updated as we hear from the community and stakeholders.



Fig 1. Bell Block residents roller blade on the Mangati Walkway



# Bell Block Spatial Plan Engagement Approach

## How We Will Engage

The engagement approach for this plan will focus on inclusive community engagement (also known as participatory engagement). This means the community will help shape the plan throughout the project with lots of opportunities to input. This includes making sure there are clear ways for people to give feedback and showing openly how that feedback has influenced decisions along the way.

Because this plan is focused on Bell Block, feedback from people who live and work in Bell Block will be given the greatest consideration. Our engagement efforts will centre on the Bell Block community to ensure the plan reflects their needs and aspirations.



Fig 2. Fishing at Bell Block Beach

## Wider District Engagement

People from neighbouring areas will be welcome to take part and share their views. Their input will be considered, but because they are less directly affected by the outcomes of the plan, it will carry less weight than feedback from the Bell Block community.

Any projects from the spatial plan requiring funding will go through a long-term plan process. The wider community will then have an opportunity to provide feedback on these projects at that time.



Fig 3. Waitara Spatial Plan Youth Engagement

## Engagement Requirements

This approach is in line with the Local Government Act (2002) and uses a modified version of The International Association for Public Participation (IAP2) framework. This framework ensures that the process is fair, inclusive, and transparent, while also tailoring it to the unique character and needs of Bell Block.

# Messaging and Communications

## Key Project Messaging

This section outlines the projects key messaging and the way updates and engagement opportunities will be shared with the community

## What is a spatial plan?

A spatial plan shows how an area is expected to grow and develop over the next 30 to 50 years. It outlines where housing, parks, roads, shops, community spaces, and services should be located so development happens in a planned, efficient, and coordinated way. Spatial plans create a shared vision for the future and help guide important funding and investment decisions.

## Why does Bell Block need one?

The Bell Block Spatial Plan is part of NPDC’s Spatial Plan programme that is focusing on areas of New Plymouth that are currently experiencing, or likely to experience, rapid growth. Bell Block is a high priority because of its growth.

The Puketapu-Bell Block Community Board asked for funding for this project to be started urgently in the Council’s Long-Term Plan 2024-2034. Funding was then approved through this process to complete the Bell Block Spatial Plan.



## Partnership and collaboration

This project is being completed by New Plymouth District Council in collaboration with the Puketapu-Bell Block Community Board and Puketapu Hapū with input from stakeholders and Bell Block community and other interested parties in the New Plymouth region.

Isthmus Group has been engaged as consultants for the Bell Block Spatial Plan and will be collaborating on the project as technical advisors and facilitators alongside Council staff as the project team.



Fig 4. Puketapu Bell Block Community Board

## Communications Strategy

When communicating to the wider community the goal of all communications is to inform Bell Block residents of the project and opportunities to input or provide feedback. This includes pre-engagement (to help draft the plan) and at formal consultation (feedback on the draft plan).

Spatial Plans can be complex and technical. When communicating to all stakeholders and the community, communications aim to be:

- Clear, jargon-free, positive, future-focused.
- Transparent about constraints and trade-offs.
- Inclusive and accessible.

To help assist with achieving a high level of engagement, project communications must be highly engaging, using diagrams and activities to gather input.



Fig. 5 Workshop activity with the Puketapu-Bell Block Community Board

## Communication Channels

As this project focuses on Bell Block, local, Bell Block communication avenues will be used where possible. This will include the following:

- Digital: Council website, Have Your Say platform.
- Targeted digital: Social media advertising and Antenna app.
- In-person: Pop-ups, workshops, community events.
- Targeted outreach: Direct emails, stakeholder briefings, phone calls to key groups. When connecting with the community all in person sessions will be located at Bell Block venues.
- Print: Flyers, posters at local shops and “Around the Block” magazine.
- Internal: Councillor Briefings, FAQs, regular project updates.



Further details relating to communications can be found in Appendix 2.



# Project Focus Area

The main focus area of the Spatial Plan project is within the Puketapu-Bell Block Community Board boundary (the area within the purple line).

The outer boundary (the dashed purple line) of the project focus area considers locations that interact with the community of Bell Block that the plan needs to understand from a network

perspective – Egmont Road, The Links Golf Course, rural land up to Manutahi Road, extending toward state highway 3A, the Mangaoraka River and back towards the coast.

Engagement will be focused on speaking to the community that falls within this area, however will not preclude broader inputs.

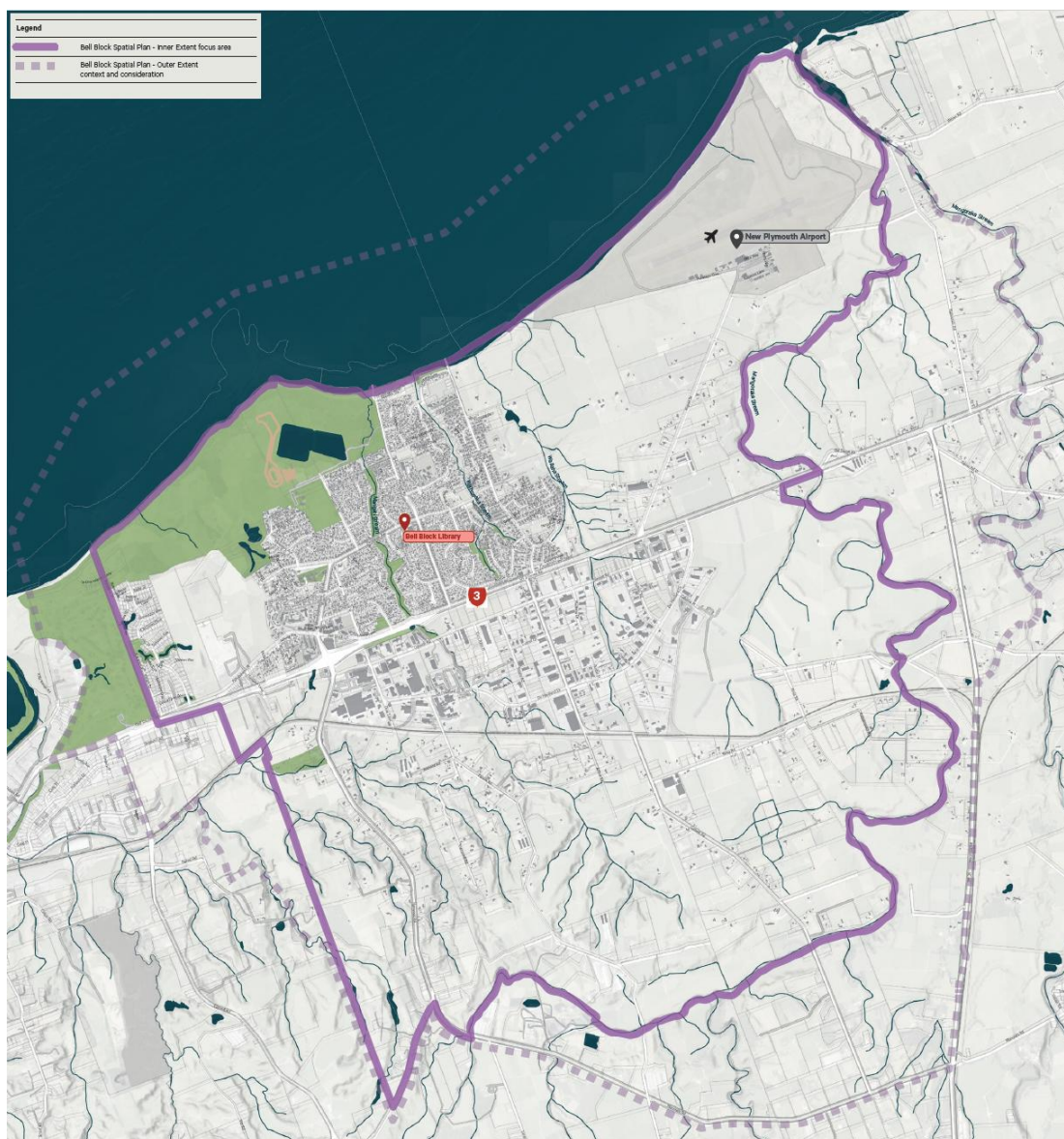


Fig 6 . The Bell Block Spatial Plan Boundary area

# Engagement Framework

## Engagement Types

The success of this Plan hinges on applying the most effective way to engage stakeholders.

Stakeholder (including residents, organisations, businesses, and government entities) input has been mapped to ensure that engagement activities are designed to maximise community input to be effective, while efficiently managing project resources. Some may fall into multiple categories.

The mapping that follows is intended to be a living document, reflecting the dynamic nature of community relationships and the project lifecycle. It also recognises community relationships are not always fixed, and some may fit / change into multiple categories. The Engagement Plan will be reviewed and updated as the Bell Block Spatial Plan moves through subsequent delivery phases to ensure continuous relevance and authentic participation.

## Local Government Requirements

The Plan’s development will follow Local Government guidelines for community consultation ensuring transparent, inclusive, and legally compliant decision-making that builds public trust and gives communities a genuine voice in shaping Local Government plans and priorities.

It's important to note that while the plan will attempt to incorporate the voice and priorities of the community, the Council is limited by budgetary constraints and legal remit of influence. The Plan will be required to be adopted by Council and decisions on the implementation of this Plan will be decided on a three yearly basis through the Long-Term Plan and yearly for Annual Plan budgets.

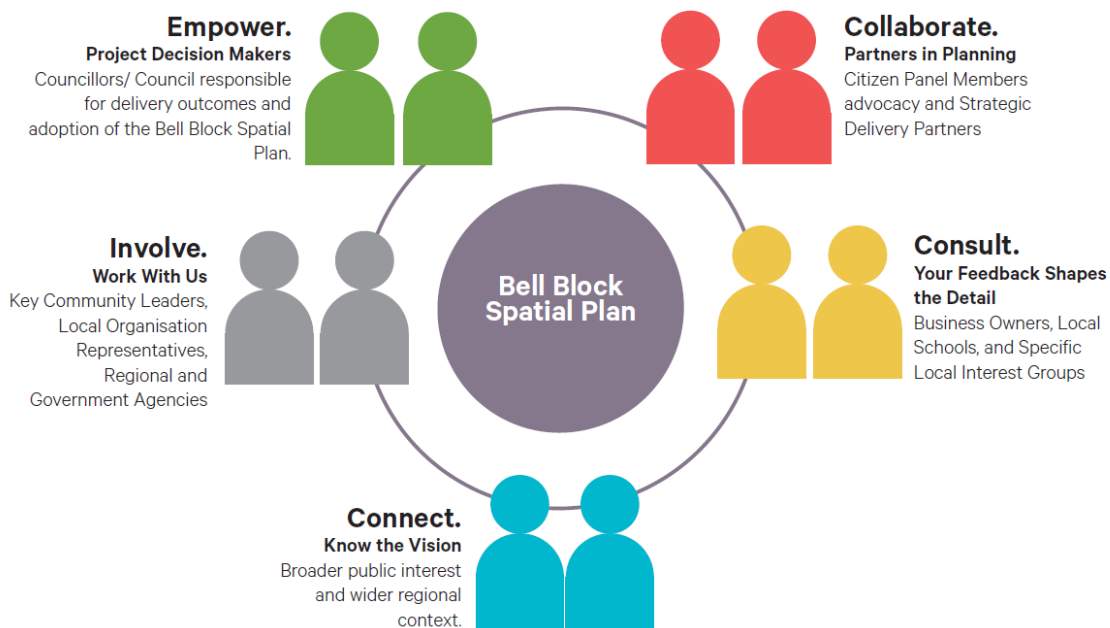


Fig 7. Bell Block Spatial Plan Engagement Structure

# How will we engage?

To ensure that the draft plan is reflective of needs and aspirations of the community of Bell Block, significant engagement with the community has been deemed appropriate.

It is standard practice as part of the spatial planning process to gather input from the community. On this basis, the following has been proposed as is standard to help shape the draft plan:

- Community Survey
- Business Survey
- Regular drop in sessions in the community
- Stakeholder conversations; and
- Workshops with Project Partners

In addition to the above opportunities a Citizens Panel approach has been included as a method to layer in more engagement with the community in a focus group environment. This is to make sure that we gather ideas and information from the community to get a solid understanding as to who and what Bell Block is right now and how the community of Bell Block would like to see it grow.

Using all the information we gather through this process an informed draft will be prepared as a result and an opportunity provided to the wider community for feedback through formal community consultation.

The project will also utilise the knowledge from a range of sources such as local businesses, organisations (e.g Venture Taranaki and the Chamber of Commerce etc), central government organisations (i.e. NZTA, Ministry of Education etc) and our own Council staff to provide information and data to help shape the plan.

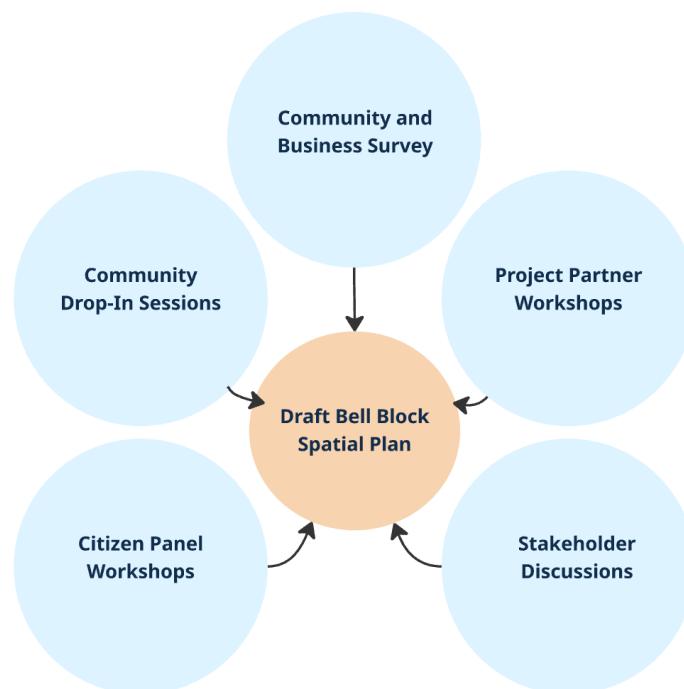


Fig 8. Diagram of engagement input in to the development of the Bell Block Spatial Plan

## Bell Block Spatial Plan Citizens Panel

### Purpose of the Citizens Panel

The Citizen’s Panel is being established to ensure the Bell Block Spatial Plan reflects the real needs, ideas, and lived experiences of local people. Its purpose is to identify key issues and opportunities for Bell Block and to help shape a plan that the community can recognise, support, and feel proud of.

By drawing on detailed local knowledge in a focused way across multiple sessions with a consistent group, the Panel will help ensure the plan is practical, grounded, and aligned with Bell Block’s long-term future.

This information will be layered alongside information gathered from the wider community, stakeholders and evidence-based data.



Fig 9. Waitara Spatial Plan Workshop March 2025



Fig 10. Waitara Spatial Plan Workshop August 2025

### Who Will Be on the Panel

The Panel will be made up of up to 25 members representing a broad cross-section of the Bell Block community. Interested parties will be encouraged to submit nominations. Members will be selected through a formal procurement process, based on set criteria and the skills, perspectives, and experiences they can bring.

This selection approach ensures a strong, diverse local voice. Workshop facilitators will guide the group through the process, and panel members are expected to be open to discussion, consider different viewpoints, and keep Bell Block’s wider vision in mind.



### How the Panel Will Operate

The Panel will meet for three design-focused workshops held in Bell Block, with the potential for additional involvement in council or community events. Sessions will be interactive and engaging, encouraging collaborative idea-refinement and constructive debate. While members may not always agree on every outcome, the process aims to build shared understanding across different backgrounds and perspectives. Meetings will take place after work hours, and an honorarium will be provided to recognise participants’ time and contribution.

For further detail on the planned content and summaries of these workshops see Appendix 3.

# Project Timeframes and Engagement

The following section outlines the project timeline and how this links in with opportunities to connect with the community and stakeholders to help shape the plan.

## Project Timeline

The project timeframe to complete the work is approximately 12-16 months.

The work will be broken into 7 different stages:

1. Project Initiation – Starting the project
2. Analysis and Key Issues – Understanding Bell Block by gathering information about the area.
3. Key Moves – Framing the identity of Bell Block, what is important to the community and what key areas the draft plan should focus on.
4. Spatial Scenarios - Development of what future Bell Block might look like, how it might grow and what projects are needed to achieve this.
5. Preparing the Draft Spatial Plan – Putting pen to paper and writing the Plan.
6. Consultation – This is an opportunity for everyone to provide feedback on the draft Plan.
7. Finalise and Adopt – Summarise feedback, make any updates that might be needed and take the Draft Plan to Council to sign off.

During all these phases of work we'll be engaging with the community and/ or key stakeholders.

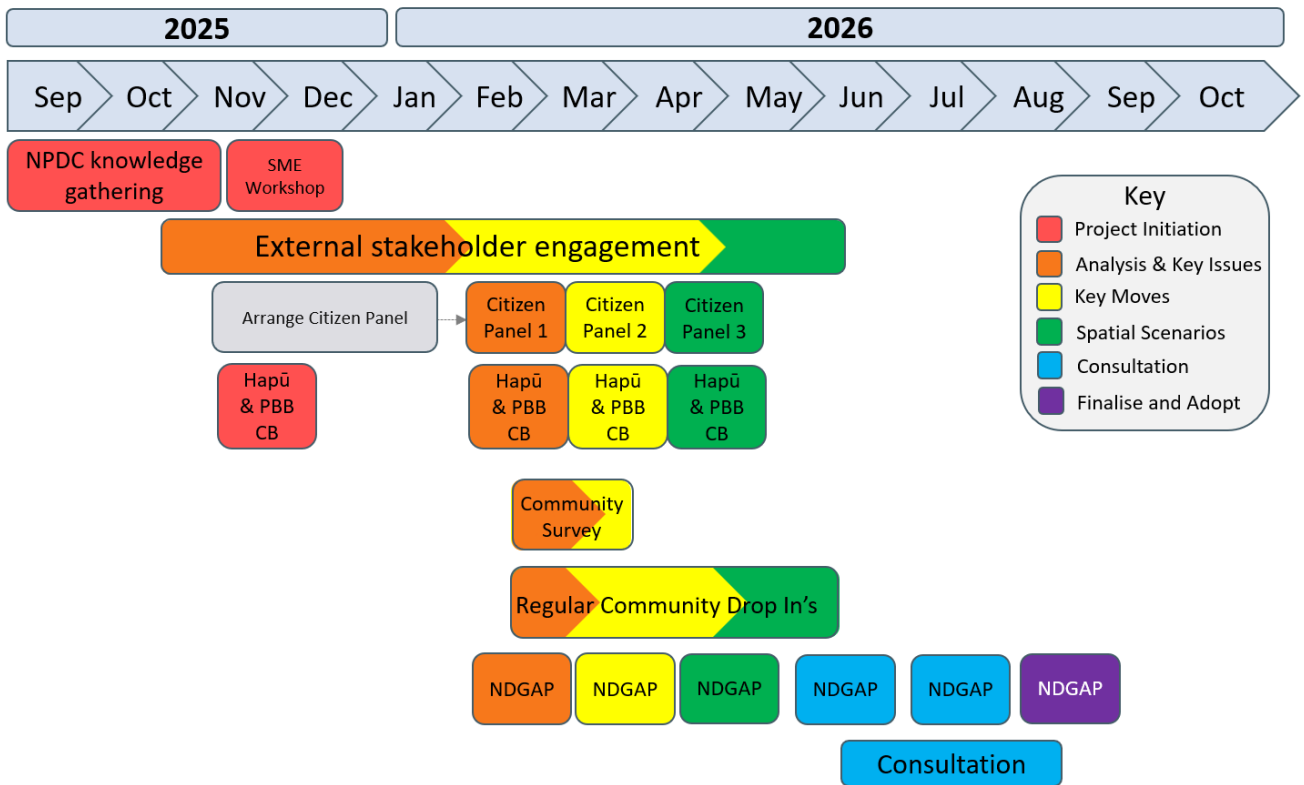
Bell Block Spatial Plan Project Timeline



## Engagement Timeline and Activities

The below timeline shows how the community and stakeholders will be engaged with during the project at what stage of the project.

Not all stakeholders are explicitly listed in the timeline. For detail as to who specific stakeholders are see appendix 1.



Definitions of acronyms shown above:

- SME – Subject Matter Experts (Council Officer Technical Advisors)
- PBB CB - Puketapu-Bell Block Community Board
- NDGAP – Ngāmotu District Growth Advisory Panel

# Appendices



**Appendix 1: Stakeholder Mapping**

**Appendix 2: Community Engagement**

**Appendix 3: Bell Block Spatial Plan Citizens Panel**

**Appendix 4: Bell Block Spatial Plan Project Partners**

## Appendix 1: Stakeholder Mapping

The following are identified as parties / organisations with a role that will input and how we will engage with these groups.

As the project progresses and additional stakeholders are identified, this table will be updated to reflect input.

Category	Organisation	Description
Project Partners	Puketapu Bell Block Community Board	Advocates for local community needs to the NPDC / regular updating and input through Community Board updates.
	Puketapu Hapū	Representatives of mana whenua in recognition of treaty partnerships.
Local Government	NPDC Councillor's / Council	Decision makers responsible for adoption of the Bell Block Spatial Plan.
	Puketapu Bell Block Spatial Plan Steering Group	Direct project reporting and decision making. The Steering Group would be kept up to date through regular reporting as the project progresses on a 4-6 weekly basis.
Ngāmotu District Growth Advisory Panel	An advisory group of development and planning technical professionals that provide recommendations to Council.	Regular opportunities to input and provide feedback into the development of the draft plan at NDGAP meetings.
Bell Block Citizens Panel	Project Group of Community Representatives to inform plan development	Design focused workshop sessions to develop the spatial plan, and provide local-led recommendations.
Community Facility	Fred Tucker Memorial Community Centre	Local community centre for hire and activities / kept aware of project through local media and format to input
	Bell Block Library	Key community asset / kept aware of project, with focus session as plan develops
	Methanex Bell Block Aquatic Centre	Key community asset / kept aware of project through local media and format to input
Public Service	Bell Block Community Policing Centre	Local Police presence for non-emergencies and liaison / kept aware of project through local media and format to input
	Fire and Emergency	Known gap in FENZ network in regard to response time.

Early Childhood Education	Bell Block Community Nest	Local childcare and early learning centre / kept aware of project through local media and format to input
	Lollipops	
	Parkland Playgroup	
	Bell Block Pohutukawa Kindergarten	
	Bell Block Childcare	
	Puketapu Kindergarten	
	Te Kōpae Piripono	
Community Service	Bell Block Life Skills Centre	Community hub for personal growth programs and initiatives / aware of project through media and format to input
Sports Club	Bell Block Rugby Sports & Community Club (Gladiators)	Provides senior and junior rugby / kept aware of project through media and format to input
	Bell Block Marist Rugby League and Sports Club (Dragons)	Offers Rugby League and Netball / aware of project through media and format to input
	Bell Block United Junior Football Club	Caters to junior football players / kept aware of project through media and format to input
	Taranaki Cycle Park	Key community and regional asset / kept aware of project through media and format to input
Education	Puketapu School	Full primary school with a strong community focus / kept aware of project through local media and format to input
	Bell Block School	Local primary school, active in community sports / kept aware of project through local media and format to input
Marae	Muru Raupatu Marae	Local meeting place for Puketapu hapū / workshop sessions as the plan develops
Local Business/ Industry	Taranaki Chamber of Commerce	Business and industry relationships / targeted meetings as the plan develops
	Parklands Shopping Centre & Bell Block Court	Local Bell Block Centre and community point / targeted meetings as the plan develops

	Venture Taranaki	Business and industry relationships / targeted meetings as the plan develops
	Industrial Zoning Mix	
	New Plymouth Airport	
	Developers	
Religious	St Luke's Church (Bell Block Co-operating Church)	Local Community / kept aware of project through local media, with format to input
	Grace Community Church New Plymouth	
	Northpoint Baptist Church	
Rest Home	MiLife on Wills	Local Community / kept aware of project through local media, with format to input
	MiLife Bell Vista	
	Maida Vale Retirement Village	
	Summerset at Pohutukawa Place	
Landowners and Developers	In areas of development potential and those most effected by transport discussions.	Direct communication regarding consultation opportunities and / or one on one conversations where needed.
Puketapu Bell Block Community	Residents and locals	Local Community / kept aware of project through media and format to input.
New Plymouth Community	General public	Wider Community / kept aware of project through media and project page with input via wider public engagement phase.
Special Interest Groups for the wider New Plymouth District	Age Concern, Grey Power, New Plymouth Rate Payers Alliance, New Plymouth Tax Payers Union, Sustainable Taranaki	Kept aware of project through regular stakeholder updates and also local media. Workshops if requested will be facilitated for these groups.
Central Government Departments	Government organisations, including NZTA, Ministry of Education, Kiwi Rail, Kainga Ora	Subject Matters Experts, organisational coordination, and targeted meetings as the plan develops - keep updated.

New Plymouth District Council Officers	New Plymouth District Council (NPDC) Technical Staff – Transportation Planners, Transport and Safety Engineer, Three Waters Planners, Growth and District Planners,	Council officer information gathering relating to Bell Block and direct input into the development of draft Plan based on Asset Management Plans and Long-Term Plan development.
Taranaki Regional Council	Taranaki Regional Council (TRC) Technical Staff	Regional Council officer information gathering relating to Bell Block and direct input into the development of draft Plan based Regional Spatial Plan requirements, public transport and freshwater matters.

## **Appendix 2: Community Engagement**

This appendix will be updated as information becomes available.

# Bell Block Community Survey

## Thank you for making the time to complete the Bell Block Community Survey

This survey gives the community of Bell Block an opportunity to help shape the future of the area. Feedback gathered here will directly help us create the draft Bell Block Spatial Plan, the Puketapu-Bell Block Community Board Plan, and the Bell Block Stormwater Catchment Management Plan.

By completing this survey and submitting your details, you'll go into the draw to win vouchers at Bell Block businesses.

Survey closes Monday 7th April 2026.

Please return printed copies to the Bell Block Library.

## Section 1: About you and how you use Bell Block

### 1. Where in Bell Block or surrounding areas do you live?

*Please let us know approximate location*

### 2. How long have you lived in Bell Block? *Select one*

- 0-2 years
- 3-5 years
- 5-10 years
- 11 years or more

### 3. What age group are you in? *Select one*

- Under 15 years
- 15-29 years
- 30-64 years
- 65 years and over

### 4. Who lives in your household? *Select as many as is applicable*

- Adults 18+
- Children (under 18)
- Older adults (65+)
- People with accessibility or mobility needs



**5. How do you get around Bell Block? Select as many as is applicable**

- Walk
- Cycle
- Mobility Scooter
- Car
- Bus
- Other (please specify)

---

**Section 2: What makes Bell Block special to you?**

**6. What is one of your favourite places in Bell Block to visit? E.g. Bell Block Beach, Hickford Park, Mangati Walkway etc**

**7. What makes Bell Block special to you? (Select 3)**

- Closeness to the beach/coast
- Walkways and cycleways
- Sense of community
- Reserves and Playgrounds
- Local shops and services
- Schools and community facilities (e.g. sporting and swimming)
- Lifestyle
- The people living here
- Peace and safety
- Business and industry
- Other

**8. What would help protect or enhance the things you love most about Bell Block? Eg. Walkways, streams, Bell Block Library, specific roads or footpaths etc**

## Section 3: Bell Blocks Identity

### 9. How would you describe Bell Block's identity?

- Part of New Plymouth  
 Its own place - like a Town  
 Other

### 10. Based on your answer to question 9, what makes you say this?

## Section 4: Transport, Safety & Movement

### 11. How do you rate the following in Bell Block?

	Very good	Good	Neutral	Poor	Very poor
Access to State Highway 3	<input type="checkbox"/>	<input type="checkbox"/>	<input type="checkbox"/>	<input type="checkbox"/>	<input type="checkbox"/>
Access to industrial zone	<input type="checkbox"/>	<input type="checkbox"/>	<input type="checkbox"/>	<input type="checkbox"/>	<input type="checkbox"/>
Nugent/Bell Block Court/Pohutukawa/Henwood roundabout	<input type="checkbox"/>	<input type="checkbox"/>	<input type="checkbox"/>	<input type="checkbox"/>	<input type="checkbox"/>
Safety at Parklands/Mangati roundabout	<input type="checkbox"/>	<input type="checkbox"/>	<input type="checkbox"/>	<input type="checkbox"/>	<input type="checkbox"/>
Driver behaviour / speeds	<input type="checkbox"/>	<input type="checkbox"/>	<input type="checkbox"/>	<input type="checkbox"/>	<input type="checkbox"/>
Pedestrian crossings (e.g. Nugent Street)	<input type="checkbox"/>	<input type="checkbox"/>	<input type="checkbox"/>	<input type="checkbox"/>	<input type="checkbox"/>
Footpaths or lighting	<input type="checkbox"/>	<input type="checkbox"/>	<input type="checkbox"/>	<input type="checkbox"/>	<input type="checkbox"/>
The cycle and walkways	<input type="checkbox"/>	<input type="checkbox"/>	<input type="checkbox"/>	<input type="checkbox"/>	<input type="checkbox"/>
Carparking at Bell Block Court	<input type="checkbox"/>	<input type="checkbox"/>	<input type="checkbox"/>	<input type="checkbox"/>	<input type="checkbox"/>
Public transport	<input type="checkbox"/>	<input type="checkbox"/>	<input type="checkbox"/>	<input type="checkbox"/>	<input type="checkbox"/>

**12. Based on how you answered in question 11, What should be addressed first?**

**13. How safe and comfortable do you feel moving around Bell Block? (E.g. traffic, lighting, sun, weather exposure)**

- Very good
- Good
- Neutral
- Poor
- Very poor

**14. Tell us about a journey you make often (walk, bike, mobility scooter or drive etc) - What works well and what doesn't?**

**15. Do you have any other comments on transport, safety and movement in Bell Block?**



## Section 5: Parks, Play, Walkways & the Coast

**16. How do you rate the following in Bell Block?** Rate the following options from very good, good, neutral, poor and very poor. This lets us know what transport and movement areas need improvement.

	Very good	Good	Neutral	Poor	Very poor
Cleanliness of Council facilities (toilets, playgrounds, reserves)	<input type="checkbox"/>	<input type="checkbox"/>	<input type="checkbox"/>	<input type="checkbox"/>	<input type="checkbox"/>
Access to Bell Block Beach via Wanaka Terrace	<input type="checkbox"/>	<input type="checkbox"/>	<input type="checkbox"/>	<input type="checkbox"/>	<input type="checkbox"/>
Recreational Facilities	<input type="checkbox"/>	<input type="checkbox"/>	<input type="checkbox"/>	<input type="checkbox"/>	<input type="checkbox"/>
Number of dedicated dog bin/bag stations	<input type="checkbox"/>	<input type="checkbox"/>	<input type="checkbox"/>	<input type="checkbox"/>	<input type="checkbox"/>
Walkways	<input type="checkbox"/>	<input type="checkbox"/>	<input type="checkbox"/>	<input type="checkbox"/>	<input type="checkbox"/>
Cycle facilities	<input type="checkbox"/>	<input type="checkbox"/>	<input type="checkbox"/>	<input type="checkbox"/>	<input type="checkbox"/>
Access and connection to freshwater environments - Rivers, wetlands and streams	<input type="checkbox"/>	<input type="checkbox"/>	<input type="checkbox"/>	<input type="checkbox"/>	<input type="checkbox"/>

**17. Which of improvements listed in the previous question (16) matter most to you?**

*Let us know what the most important improve is (one improvement)*

**18. If we could add ONE new space or feature to support community wellbeing, what should it be?** E.g. Playground north of Mangati, coastal path, basketball courts, fenced play space, dog park, etc

**19. Do you have any other comments on Bell Block's parks, play, walkways or the coast?**



## **Section 6: Local Shopping**

**20. Where do you mainly shop in Bell Block?**

- Parklands Shopping Centre
- Bell Block Court
- I don't shop in Bell Block. I shop in New Plymouth.
- Other

**21. Based on your answer from the previous question (20) - What do you like about shopping there?**

**22. What could be done to improve Bell Block's shopping centres?**

**23. Do you have any other comments on Bell Block’s shopping centres?**

**Section 7: Community Services & Facilities**

**24. How do you rate the following in Bell Block?** *Rate the following options from very good, good, neutral, poor and very poor. This lets us know what transport and movement areas need improvement.*

	Very good	Good	Neutral	Poor	Very poor
<b>Bus routes / how far the bus route goes /what areas they cover</b>	<input type="checkbox"/>	<input type="checkbox"/>	<input type="checkbox"/>	<input type="checkbox"/>	<input type="checkbox"/>
<b>Accessibility of Council facilities for all people (elderly, disabled, prams etc)</b>	<input type="checkbox"/>	<input type="checkbox"/>	<input type="checkbox"/>	<input type="checkbox"/>	<input type="checkbox"/>
<b>Public toilets (including accessible toilets)</b>	<input type="checkbox"/>	<input type="checkbox"/>	<input type="checkbox"/>	<input type="checkbox"/>	<input type="checkbox"/>
<b>Parking at key community facilities</b>	<input type="checkbox"/>	<input type="checkbox"/>	<input type="checkbox"/>	<input type="checkbox"/>	<input type="checkbox"/>
<b>Maintenance of Council facilities</b>	<input type="checkbox"/>	<input type="checkbox"/>	<input type="checkbox"/>	<input type="checkbox"/>	<input type="checkbox"/>
<b>Fred Tucker Hall</b>	<input type="checkbox"/>	<input type="checkbox"/>	<input type="checkbox"/>	<input type="checkbox"/>	<input type="checkbox"/>
<b>Youth facilities</b>	<input type="checkbox"/>	<input type="checkbox"/>	<input type="checkbox"/>	<input type="checkbox"/>	<input type="checkbox"/>
<b>Connections to Summerset / Maidavale / MiLife/ Aged care</b>	<input type="checkbox"/>	<input type="checkbox"/>	<input type="checkbox"/>	<input type="checkbox"/>	<input type="checkbox"/>
<b>Shopping centre experience (e.g. parking, restrooms, wifi, seating, accessibility)</b>	<input type="checkbox"/>	<input type="checkbox"/>	<input type="checkbox"/>	<input type="checkbox"/>	<input type="checkbox"/>
<b>Public rubbish collection</b>	<input type="checkbox"/>	<input type="checkbox"/>	<input type="checkbox"/>	<input type="checkbox"/>	<input type="checkbox"/>

**25. How well do you think the Bell Block Library is serving the community?**

*NPDC is currently leasing the building that the Bell Block Library is located in. What could be improved? Do you have any suggestions for what this facility could look like in the future or what additional services it could provide?*

**26. Do you have any other comments on Bell Block’s community services and facilities?**

**Section 8: Growth, Subdivisions & Future Planning**

**27. How do you feel about future housing growth in Bell Block?**

- Supportive
- Cautiously supportive
- Concerned
- Strongly opposed
- Unsure

**28. What concerns you about future housing growth**

**29. If housing growth does continue in Bell, what do you think is most important to get right?** *Select 3*

- Roading capacity – Managing increased traffic flow and congestion
- Green spaces (like parks) built into new subdivisions
- Footpaths and routes for walking, biking, and other non-car travel
- Stormwater infrastructure - Drains and pipes that manage rainwater
- Drinking water and wastewater capacity – Bigger pipes and processing systems
- Community facilities - Playgrounds, halls, meeting spaces and youth spaces
- Streetscape quality - trees, paths, lighting and seating
- Schools
- Other (please specify)

**30. What should be done FIRST and why?** *From the above selection, tell us what is the most important and why.*

**31. What stormwater issues have you experienced in Bell Block?** *We're interested in your experiences with stormwater in Bell Block. Select any that apply to you and tell us more about them.*

- Flooding incidents
- Pollution in streams
- Damage to streambanks or wetlands
- Other
- No, I don't have any stormwater experiences I want share

**32. Based on your answer to question 31, Tell us more about your experience, when it happened and where this happened in Bell Block**

---

## Section 9: Final Thoughts

**33. What would you like to see happen in the Bell Block area over the next 3 years, 10 years and 30 years?**

**34. Is there anything important that we haven't asked about?**

**35. If you want to be kept up to date about the project, please provide your email address here.**

**36. If you want to go into the draw to win vouchers to Bell Block businesses please provide your name, phone number and email address here.**

### **Appendix 3: Bell Block Spatial Plan Citizens Panel**

This appendix will be updated as information becomes available.

**Get involved!**  
**Call for the Bell Block**  
**Citizen Panel**

Puketapu-Bell Block  
Community Board



NPDC

# Help shape Bell Block!

Putting your name forward for the Citizen Panel is an opportunity to help shape the future of Bell Block. The panel will dive into three workshops to provide advice and recommendations to the Community Board and NPDC to better inform the design and opportunities for a future Bell Block.

A focussed panel means working collaboratively to refine ideas that will improve the look, function, and feel of Bell Block for the next 30 years and beyond. This panel will be exploring key areas that shape how Bell Block grows and develops.

The panel will be made up of representatives from the wider community to ensure we have a strong and diverse local voice.

We will have facilitators to support members through the process of development of the spatial plan.

Panel members will need to be open to discussion, understand the broader perspectives, and consider Bell Block's vision for the future. The wider community will still have a chance to contribute to the process and have their say on ideas put forward by the panel.

All information from this process will go to New Plymouth District Council for consideration.

**It's an exciting opportunity to be part of the team that actively shapes and informs outcomes for Bell Block!**

## Personal qualities of panel members

### Community oriented

- 'Big picture', community-minded individuals who have a strong connection to the Bell Block area and the local community.

### Committed, open-minded and proactive

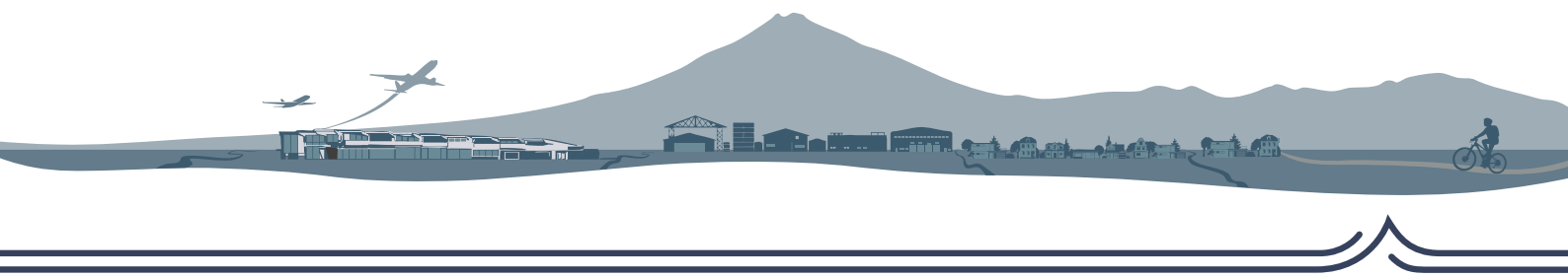
- Willing to commit to the working panel and time allocated.
- Willing to learn and take a diverse set of views into account.
- Actively listen to and engage with others, and will seek and share feedback from the community.

### Positive and respectful

- Have a positive mindset and looking for solutions.
- Able to interact, debate and discuss in a respectful way.

### Bell Block aware

- Understanding of Bell Block's identity, what makes this place special and unique, promoting Bell Block's past, present and future.



## Citizen Panel Make-up and Expectations

The panel will represent a cross section of the community and provide valuable local knowledge. Maximum numbers will be 25, and members will be confirmed by the Council project team to ensure representation from across the community. We will be confirming members based on the criteria and skills they can bring to the panel \*refer to application page.

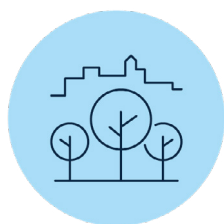
Members will attend a series of three design focussed sessions to be held in Bell Block, with potential for a further role to support at council and community events.

By signing up to this process to attend meetings, you commit to be a supportive and active member of the panel.

Honorarium will be provided. We value people's time, energy and input. We intend that these sessions are fun, interactive, and are part of the development of Bell Block. However, we also expect rigorous discussion and debate - the panel may not agree on all outcomes - but we will in the process understand the backgrounds, perspectives and decisions of each other.

Sessions will be held after work, and members will be acknowledged for their time and input into the process. All background material and information will be provided to confirmed Working Group members in advance of the first working session in February 2026.

### 5 key areas for improvement:



Recreation &  
Civic Services



Growth



Transport



Lifestyle



Identity

## Bell Block Citizen Panel Timeline:

Nomination replies close – **14 December 2025**

Attendees confirmed and  
invitations extended – **18/19 December 2025**

### Do you have any questions?

Please contact the NPDC Project Team:

Phone: +64 06 759 6060

Email: [enquiries@npdc.govt.nz](mailto:enquiries@npdc.govt.nz)

### Citizen Panel 1

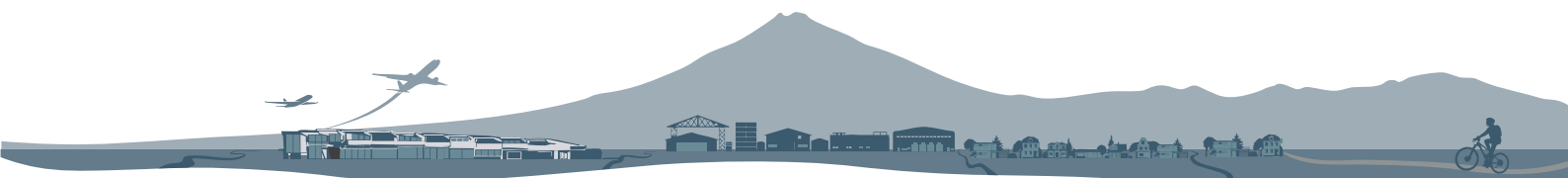
Week beginning 9th February 2026  
Time & location to be confirmed.

### Citizen Panel 2

Week beginning 16th March 2026  
Time & location to be confirmed.

### Citizen Panel 3

Week beginning 11th May 2026  
Time & location to be confirmed.



**Get involved!**  
**Call for the Bell Block**  
**Citizen Panel**

Puketapu-Bell Block  
 Community Board



NPDC

# Help shape Bell Block!

New Plymouth District Council is establishing a Community Partners Working Group to lead in the future Bell Block planning program. Complete this form if you would like to nominate yourself or someone else for the Panel. Please use a separate form for each nomination you make. \*If you nominate someone else, please show that they confirm their acceptance of the nomination below.

**Please return the completed form by Sunday 14th December 2025 (midnight).**

Post to: Private Bag 2025, New Plymouth 4340.

Email to: enquiries@npdc.govt.nz | Subject Heading: Bell Block Spatial Plan Citizen Panel Nomination.

Drop off to: Bell Block Library and Service Centre - 188 Parklands Ave, Bell Block; or  
 Civic Centre - 84 Liardet Street, New Plymouth.

## Candidate Information

Nominated by:  Myself  Someone Else\*

Name

Name

Address

Address

Telephone

Telephone

Email

Email

Signed  
(Nominator)

Acceptance\*  
(Nominee)

Please indicate your preferred  
workshop timing

4:30pm - 7:00pm  
Week nights

6:30pm - 9:00pm  
Week nights

Weekends  
Morning

Weekends  
Afternoon

*Criteria & Skills	✓	Comment / Reason for interest / Connection to Bell Block
Strength, knowledge, experience in the Bell Block Community		
Bell Block Resident		
Bell Block Worker		
Local business/ organisation		
Transport/ Infrastructure		
Landowner/ developer		
Environment, conservation		
Youth, young adult		
Community clubs & organisations		
Historical, personal connection		
Other, please specify		

# Bell Block Spatial Plan

Citizens Panel Workshop #2 Preparation

March 2026



# Contents

Project Update .....	2
Thank you .....	2
Project Update .....	2
Workshop 1 Summary – Activity 1: Making Connections .....	3
What you love about Bell Block .....	3
Workshop 1 Summary – Activity 1: Making Connections .....	4
Why you put your name forward for the Citizens Panel .....	4
Workshop 1 Summary – Activity 2: Understanding Bell Block .....	5
Bell Block “Hot Topics” .....	5
Green Spaces and Parks: What we heard .....	5
Housing a community: What we heard .....	7
Linking up the Local hubs: What we heard .....	9
Identity and connectivity: What we heard .....	11
Employment and Innovation: What we heard .....	13
Citizens Panel Workshop #2 Homework .....	15
Citizens Panel Workshop #2 Homework .....	16
Tell us what you think .....	17



# Project Update

## Thank you

A big thank you to all who made it along to the first workshop for the Bell Block Spatial Plan Citizens Panel. At Workshop #1 we completed the following activities as well as a quick introduction to spatial planning:

- Activity - Ice breakers: Making connections, understanding what you love about Bell Block and why you put your name forward to be on the panel.
- Activity - Understanding Bell Block using prompts about key focus areas to gather your thoughts

The purpose of these activities was to help us ‘test’ a few ideas with you as a group, understand what’s important to focus on as we move through this project and build a vision.

For those who couldn’t make it, we set up a catch-up session to gather their thoughts, which has now been incorporated into our project information.



Fig 1. Bell Block Spatial Plan Citizens Panel – Workshop 1

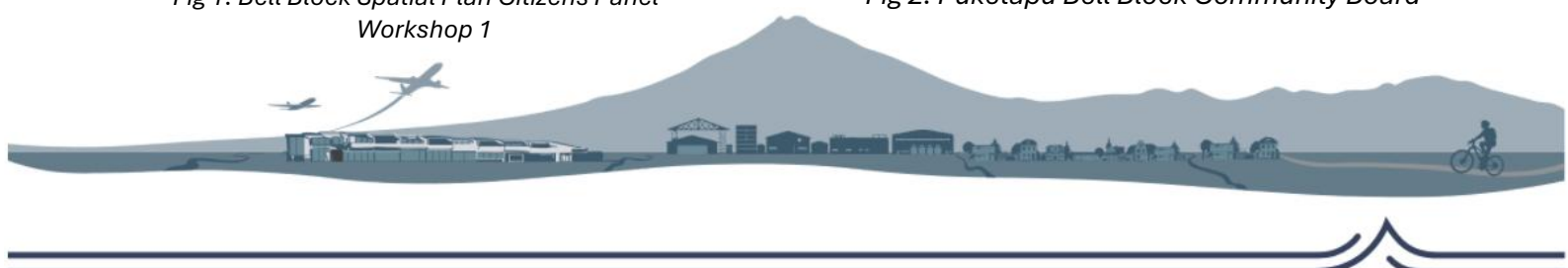
## Project Update

Since we last meet on the 19th of February, the project team has been busy working on the project to help get us ready for the next session with the Citizens Panel. This has included:

- Discussions with stakeholders and business owners
- Published a community survey
- Published a project engagement plan
- Summarised information from Citizens Panel Workshop #1
- Defined focus areas for the project
- Created a “work in progress” list of outcomes the Spatial Plan will achieve
- Planned for the next Citizens Panel Workshop # 2
- Completed a workshop with Puketapu Hapū



Fig 2. Puketapu Bell Block Community Board



# Workshop 1 Summary – Activity 1: Making Connections

## What you love about Bell Block

We heard a lot of things that you all loved as a group about Bell Block, with a lot of common threads. What made it clear to us is that you love the people, the land, coast and the facilities. Most importantly Bell Block is a friendly, caring community.



Fig 3. Word Cloud – What we heard you love about Bell Block



# Workshop 1 Summary – Activity 1: Making Connections

## Why you put your name forward for the Citizens Panel

There are a lot of reasons why you signed up to be part of the Citizens Panel, but most importantly, we noticed that whether you live in Bell Block at the moment or not right now, you're all very passionate about making sure Bell Block continues to be a great place to live now and into the future.



Fig 4. Word Cloud – Why you put your name forward for the Citizens Panel



# Workshop 1 Summary – Activity 2:

## Understanding Bell Block

### Bell Block “Hot Topics”

For this activity we focused on five different areas that we understood were “hot topics” for the Bell Block area. We asked you to help us understand these topics better by asking questions about them. The “Hot Topics” were:

1. Open spaces and our water
2. Housing a community
3. Linking up the local hubs
4. Identity and connectivity
5. Employment and innovation

---

### Green Spaces and Parks: What we heard

Citizens Panel feedback highlighted that the natural environment is valued and there are opportunities for recreation and the coastline. As Bell Block continues to grow, the Citizens Panel would like better access to these places and fair, well spread parks for everyone to enjoy.

#### Here’s more detail:

##### Coast & Water

- Everyone loves the beach, but getting to them needs to be easier for all abilities.
- Wetlands, streams and lagoons are important, and these places need to be

protected and explained better, with simple information signs.

- As new housing areas develop, streams and green spaces should not be built over.

##### Parks, Play and Sports

- Parks and playgrounds are good, but many are too small for the number of families. More are needed to cater for all ages.
- Different types of play spaces connected along walkways is needed.
- Hickford Park is valued, but some areas aren’t used well. Sports facilities and cycling areas need to be upgraded, and grazing land needs to be repurposed.

##### New Neighbourhoods and Walkways

- Some new areas, like around Wills Road, don’t have enough open space.
- Families want simple local spaces to kick a ball, meet up, or relax.
- We heard that walkways are loved by the community, but these should be joined up better to make walking and biking easier.

##### History & Identity

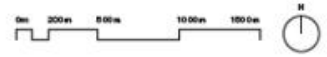
- History and cultural identity of Bell Block should be more visible through signage, names and artwork to unlock the depth of the place.



Fig 5. Examples of different types of parks

# Bell Block Spatial Plan.

## Green Space and our Water.



### Key Things to Consider

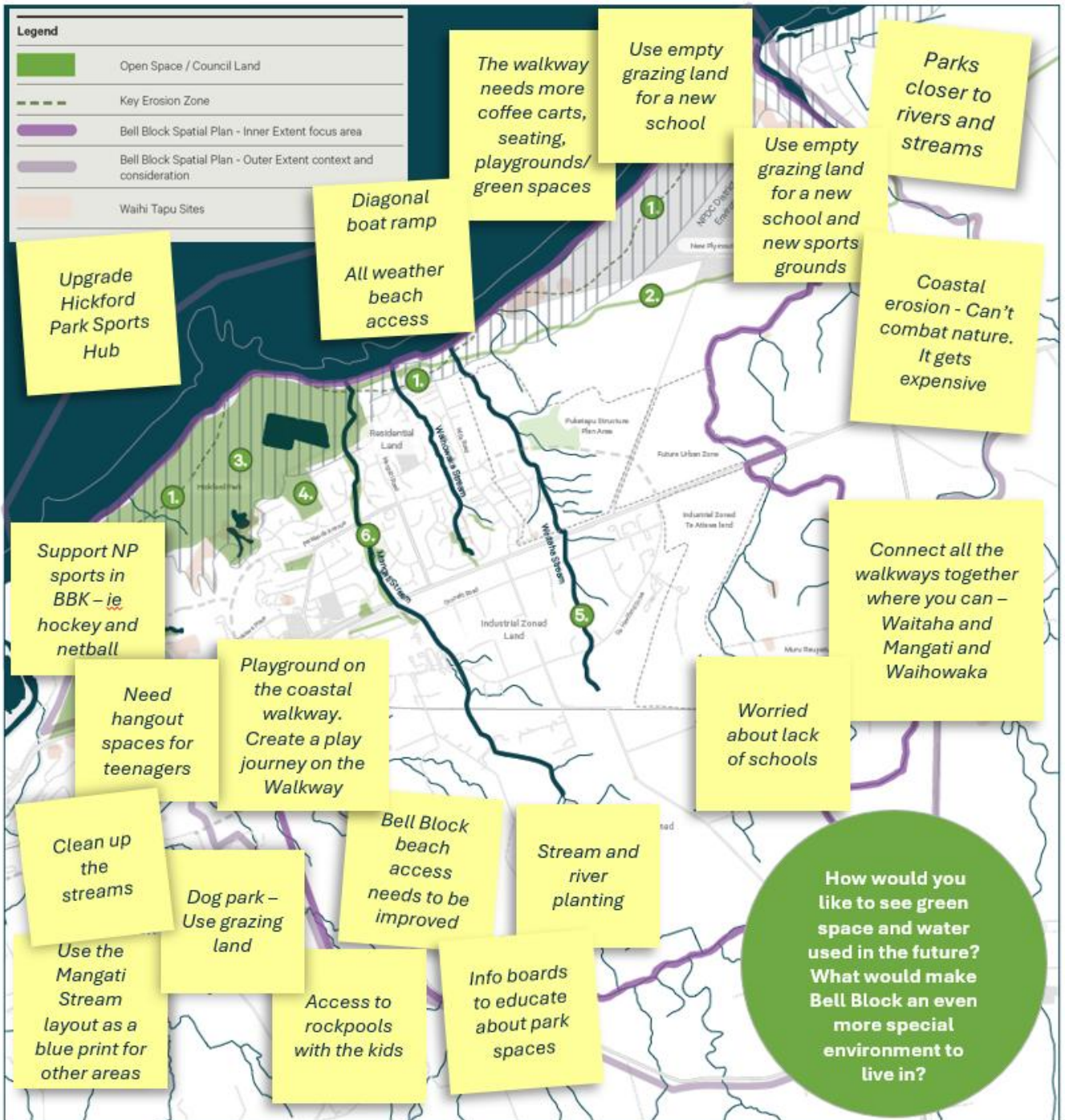
1. Coastal erosion?
2. The coastal walkway?
3. Council land use?
4. Hickford Park sports fields?
5. What's Upstream?
6. Rivers

NPDC own 314 hectares in Bell Block, including 226 hectares of parks.

Approximately 70% of houses are within 15min walk of open space

Over 105km of streams in Bell Block across the Mangati, Waihowaka, and Waitaha.

### Images from Bell Block



# Workshop 1 Summary – Activity 2: Understanding Bell Block

## Housing a community: What we heard

The Citizens Panel wanted to keep the friendly feel of Bell Block while allowing for new housing. People love cul-de-sacs because they feel safe. There are worries that new developments have very small sections with not enough space for recreation while also negatively impacting on the network of roads and pipes. Trees and greenery in new neighbourhoods were also noted as being important to help keep the area appealing and liveable.

### Here's more detail:

#### Neighbourhood Feel & Cul-de-sacs

- People value cul-de-sacs because they feel safe, encourage children's play, and create natural "bump spaces" where neighbours meet.
- Some noticed that cul-de-sacs help reduce traffic and create quieter streets where their kids can play safely.
- At the same time, people understand that cul-de-sacs can't easily support higher-density housing,

- while straighter streets can handle more parking and traffic.

#### Housing Growth

- There was some concern about whether the current roads, parks and infrastructure can cope with more homes.
- People feel that tight lots in new developments sometimes don't leave enough room for recreation, greenery, or family outdoor space.
- There is strong support for more street trees in new neighbourhoods to improve shade.

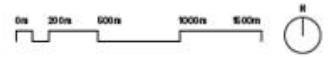
#### Housing Types

- Many residents want to keep a balance between family homes and housing suitable for older people.
- People are worried about taller buildings. Three-storey homes are strongly disliked, and even two storeys make some residents nervous.
- There was an understanding however that the traditional family home is becoming less affordable, and new types of housing may be needed



Fig 6. Examples of infill or higher

# Bell Block Spatial Plan. Housing a Community.



## Key Things to Consider

1. Current new builds
2. Future centres
3. Who are we housing
4. Next version of housing
5. Puketapu structure area
6. Public services

Projected number of new homes is approximately 1,253 by 2054.

Currently 3,532 homes in Bell Block

## Images from Bell Block



Legend	
	Residential Character area
	Potential Intensification Area
	Hard Boundary for development
	Maori Owned Land
	Bell Block Spatial Plan - Inner Extent focus area
	Bell Block Spatial Plan - Outer Extent context and consideration
	Waihi Tapu Sites

**Sticky Note Feedback:**

- Highschool, commercial area, another supermarket needed to support growth
- Need a new hub to support new neighbourhood
- Park and ride options to help reduce traffic
- Need another underpass to support more people
- Don't want medium density houses. Smaller sections are ok
- Newer housing = not right mix
- Older housing here = good range
- We don't want to become Auckland
- Ensure enough parking spaces for bigger families
- No high rises
- Need to think about public transport
- Lots of families and retirees live here
- Disjoint between services and resi
- Replicate the community model at Hickford Park and Mangati in new area
- What type of housing will define Bell Block now and into the future? What supporting services do we need for this growing neighbourhood?
- Need jobs in the industrial area to keep people in the area
- New home buyers need affordable options
- 2 story max for newer houses is ok
- Cul-de-sac = great play area
- Houses are expensive in BBK
- No backyards = more need for public parks and playgrounds
- Don't fill in parks with houses
- Older housing here = good range
- Need to think about public transport
- Need to think about public transport
- Need to think about public transport

# Workshop 1 Summary – Activity 2: Understanding Bell Block

## Linking up the Local hubs: What we heard

The Citizens Panel wants Bell Block to grow safely and be easy to get around. As new neighbourhoods develop facilities to cater to new families will be needed this will need to be done in a way that keeps Bell Block's character. The airport could also play a bigger role. The biggest concern is traffic, especially the busy on-ramps and off-ramps.

### Here's more detail:

#### Roading Character Parklands Ave Future Extension – What this should look like

- Wider streets and footpaths so families can bike safely as well as wide footpaths for mobility scooters, prams, and kids on bikes. Traffic calming would be needed.
- Safe crossing points for walkers where walkways meet the road, seating as well as shelter to support walkers.
- Parking to suit multi-generational households would need to be thought about.
- Street tree planting along Parklands, possibly continue the palm-tree look as well as signage and art to help express Bell Block's identity.

#### Schooling options

- A high school is needed to support the kids that are at Bell Block and Puketapu School. This could be a Junior College and or Kura Kaupapa might be a good option instead of a traditional high school.

#### Hubs

- More commercial space for local businesses – this could include meeting spaces and conference rooms
- Another supermarket so people don't have to travel far.
- A larger library in either the new hub or Bell Block Court is needed.
- The idea of a Kmart was tested, but this would only work, if it suits Bell Block's character. This would be hard to achieve.
- Public toilets at every hub.
- Better use of the airport area – like another small hub with services that could compliment services already there.

#### Parks

- A new neighbourhood area will need more parks to support the new community this could include a dog park and playground.

#### Roads

- Solutions to congestion is needed urgently before Bell Block grows again.



Fig 7. Examples of what Parklands Avenue extension could look like



# Workshop 1 Summary – Activity 2: Understanding Bell Block

## Identity and connectivity: What we heard

The Citizens Panel wants Bell Block’s historic and cultural stories and identity to be more visible. They value Bell Block’s village feel, coastal setting, and rich natural environment, and want to protect this as the area grows. People also want safer, more welcoming public spaces. At the same time, traffic congestion is a major concern, and locals feel this needs to be fixed to keep Bell Block a great place to live.

### Here’s more detail:

#### Celebrating Local History and Identity

- There’s a desire to learn about Bell Block’s history and stories before and after colonisation through public art, Puketapu hapū narratives, and te reo Māori signage.
- This could also be achieved through wayfinding, trails, and digital or interactive storytelling.
- Visitors and residents travel through Bell Block, without even knowing it. There’s an opportunity to welcome them and let them know that they’re moving through Bell Block.

#### Sense of place

- Residents value Bell Block’s village feel and coastal setting. There is an appreciation of the rich natural environment and want to protect it.
- Many like that Bell Block feels slightly separate from New Plymouth (in a positive way).
- Community wants safer, more welcoming places to walk and gather that cater to all accessibility needs.
- Not many places have an airport, state highway access, jobs, industry, schooling, outdoor areas, bike park, sports fields, beaches and streams. It’s already a great place for residents to live, but there’s a lot that can be done to make it even better.
- Bell Block is a rich area of New Zealand history and identity.

#### Traffic and Congestion

- Traffic congestion is a major concern. A solution needs to be found to keep Bell Block a great place to live.
- Several solutions were discussed including additional roundabouts or lights at Egmont. Creating a new off ramp at Pohutukawa Place and closing the current one that connects to the Henwood interchange.



Fig 8. Examples of ways to express identity with art and infrastructure

# Bell Block Spatial Plan.

## Identity and Connectivity.



### Key Things to Consider

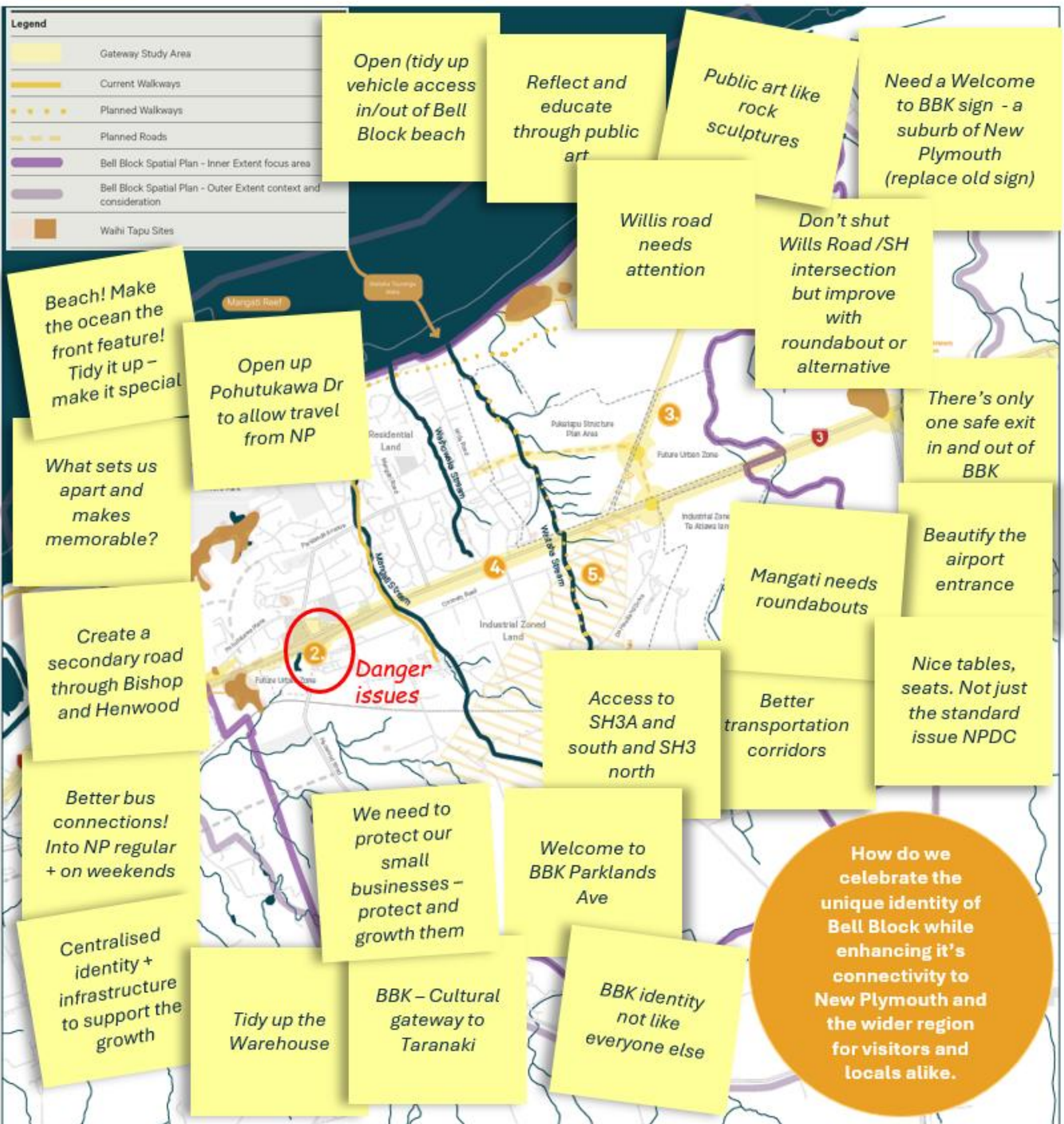
1. The airport as a gateway
2. How do you enter Bell Block?
3. Bell Blocks Point of Difference
4. SH3 corridor acknowledging Bell Block
5. Visual Landmarks
6. Beginning and end to Bell Block

### Images from Bell Block

Each year, Bell Block welcomes or farewells over 400,000 passengers who pass through the airport.

Over 43 kainga attributed to Puketapu were situated throughout the Bell Block area.

Almost 4km of accessible coastline. Over 200 hectares of open space. Over 65km of coastal walkways.



# Workshop 1 Summary – Activity 2: Understanding Bell Block

## Employment and Innovation: What we heard

The Citizens Panel told us that Bell Block has a strong base of local skills and innovation, especially in the industrial area, and the Citizens Panel want these strengths recognised and connected to more job opportunities for young people.

Supporting industry is important to residents, but heavy vehicles in residential streets are a concern. Better connections between the residential and industrial areas.

### Here's more detail:

#### Local Skills and Industry

- Bell Block has a deep pool of specialised skills and innovation, much of it not widely recognised. These “hidden” skills could help shape Bell Block’s identity and future opportunities.
- There is interest in creating more local jobs for young people and strengthening the link between the community and the industrial area.

#### Commercial Centre Needs

- There is a need to have a clear commercial activity area. This should be one that serves residents, workers, and visitors.
- The challenge is finding a location that is easy for both the community and the industrial workforce to access.

#### Supporting the Industrial Area

- Services are needed in the industrial zone to support employees who work here – This includes daycare, doctors and cafes.
- Businesses who operate in this space support residents of Bell Block with jobs, sponsorships and alternative food retail options.

#### Connections and Movement

- The current truck stop at Bell Block Court (used by trucks from the industrial zone and further afield) puts heavy traffic into residential areas. Many feel it should be relocated.
- There is support for diversifying heavy-vehicle routes, especially with traffic congestion on Henwood and Egmont Roads.



Fig. 9 Examples of innovation and business

# Bell Block Spatial Plan. Employment and Innovation



## Key Things to Consider

1. Current big employers
2. Local vs regional employment
3. Movement pinch points
4. Services migrating
5. Everyday use of area
6. Community benefit

This area is projected to experience an estimated 2824 new jobs, representing approximately 74% of New Plymouth's total industrial employment growth

This area currently employs 3700 people, Half the population of Bell Block.

## Images from Bell Block



## Legend

- Employment and Innovation Study Area
- Current Major Roads (in the industrial area)
- Planned Roads
- Bell Block Spatial Plan - Inner Extent focus area
- Bell Block Spatial Plan - Outer Extent context and consideration
- Waihi Tapu Sites



# Citizens Panel Workshop #2 Homework

Using the information gathered at the first Citizens' Panel Workshop, the project team has begun shaping a *work-in-progress* Vision, Outcomes, and Values for the future of Bell Block. These form key parts of a typical Spatial Plan framework. We'll talk you through what we've developed so far, and you can also find it in this document.

## Workshop #2 Activities

In Workshop #2, we'll ask more questions to check if we're on the right track. We'll explore what future Bell Block could look like now that we understand its challenges and opportunities. We'll also ask you to identify the key projects needed to achieve this future and help us understand which should be prioritised first.

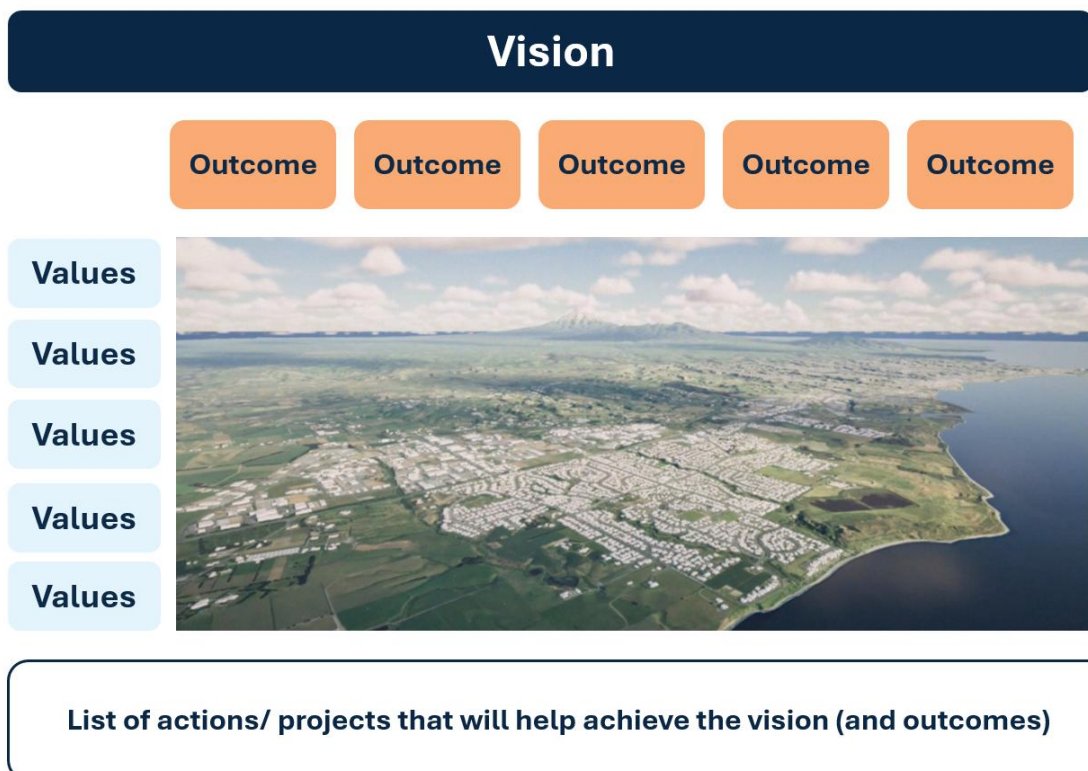
## What makes up part of a Spatial Plan?

**A Vision** – This is a statement of intention describing what you want your town or community to be like in the future. It helps people imagine what the future could look like and makes sure everyone is working toward the same long-term direction.

**Outcomes** – These translate the Vision into specific goals. They help us understand what success looks like, show whether the Vision is being achieved, and ensure the Spatial Plan is more than just a map. It becomes a purposeful strategy for improving the future of a place

**Values** – These are the things that are important to the community. Values help guide how decisions are made, what should be prioritised, and reflect the identity of the place and its people.

## Typical Spatial Plan Framework



# Citizens Panel Workshop #2 Homework

Reflecting on the summaries of Workshop #1, consider the below as a “work in progress” version of Bell Blocks possible vision, outcomes and values that will shape the Spatial Plan. This has been drafted as a starting point based on all the information gathered at Workshop #1.

We’ll continue to work on this over the next few months, but feedback is appreciated. Over the page space has been provided for you to write your feedback.

## “Work in progress” Bell Block Spatial Plan Vision, Outcomes and Values

### Bell Block A neighbourhood in-sync with its natural environment - known for its' ability to grow and express itself to offer a lifestyle and industry presence sought after in Taranaki

**OUTCOME**  
A safe & vibrant neighbourhood is achieved for all families and households through all stages of life

**OUTCOME**  
We protect & enhance our open spaces and natural assets, so we can continue to cherish and enjoy them for future generations

**OUTCOME**  
A thriving industrial area that works in unison with Bell Block, whilst strongly contributing to the regional economy

**OUTCOME**  
Coming to and moving through Bell Block is easy. Local movements can be made through a variety of modes for all users

**OUTCOME**  
Bell Block Continues to Evolve as a Whole, Rather than Two Halves. Our neighbourhood is connected in all the senses



**VALUES**  
Te Taiao (nature) First Builds a Healthy Neighbourhood

**VALUES**  
Together in Partnership, Our Community Thrives

**VALUES**  
Good for Locals, is Good for the District & the Region

**VALUES**  
We are Resilient, so too is our Natural Environment

## **Tell us what you think**

Use this space to write any feedback you might have.

Do you think the “work in progress” vision, outcomes and values reflect the people and identity of Bell Block?



Te Kaunihera-ā-Rohe o Ngāmotu

**New Plymouth  
District Council**



# Bell Block Spatial Plan

## Citizens Panel Workshop Supporting Information

March 2026



# Contents

The purpose of this document .....	2
Workshop #1 PowerPoint Slides .....	3
Workshop #1 Prompt Cards .....	16
Open spaces and our water .....	16
Open spaces and our water .....	17
Linking up the local hubs .....	18
Identity and connectivity .....	19
Employment and innovation .....	20
Questions from Citizen Panel .....	21
Workshop #1 Supporting Information .....	22
NZTA – Urban Connectors .....	23
Venture Taranaki - Taranaki Statistics .....	27
NPDC Puketapu Structure Plan Development Area – Future Development Strategy .....	29
Bell Block Spatial Plan - Bell Block Map .....	30
Bell Block Spatial Plan - Aerial .....	31



# Supporting Information

## The purpose of this document

A lot of information was provided to the Citizens Panel at the first Workshop. This information was gathered from a number of sources – most of which are publicly available across Central Government websites, but also the New Plymouth District Council (NPDC) website.

This document has been put together just in case there was anything that was particularly interesting that you wanted to look at again.

As we complete each workshop, we'll update this document as a record of what we covered during this progress, together with the Citizens Panel.

The following is a list of information:

1. Citizens Panel Workshop #1 PowerPoint Slides (not publicly available yet)
2. Workshop #1 conversation starters – Additional questions (not publicly available yet)
3. NZTA – Urban Connectors
4. Examples of what these types of Roads look like
5. Venture Taranaki - Taranaki Statistics
6. NZTA De Havilland Drive/Airport Drive roundabout
7. NPDC Puketapu Structure Plan Change Area – The new planned neighbourhood between Wills Road and Airport Drive (along the new Parklands Extension).
8. NPDC – Bell Block Spatial Plan Maps and Aerials



*Fig 1. Bell Block Spatial Plan Citizens Panel – Workshop 1*



# Workshop #1 PowerPoint Slides



## Bell Block Spatial Plan Citizens Panel Workshop #1

19 February 2026

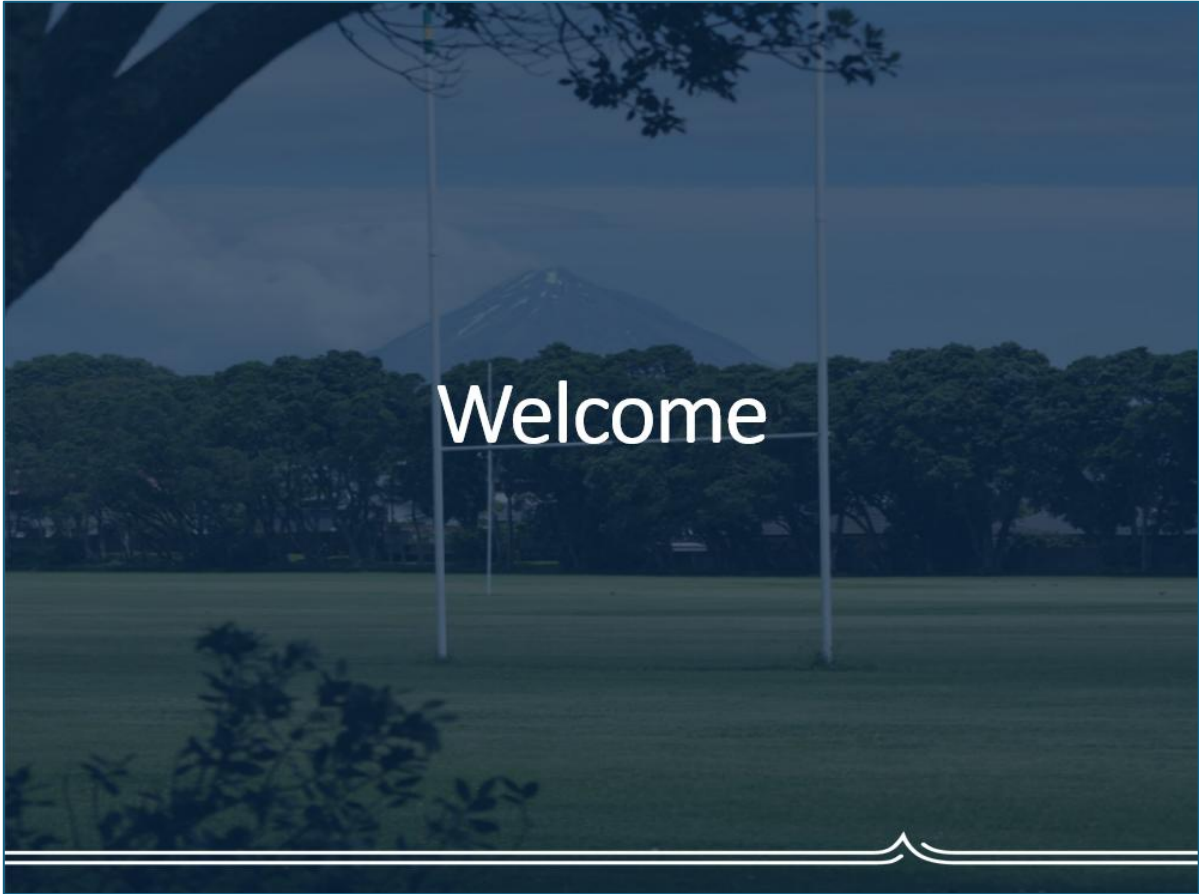
### Agenda

- 4:30 pm **Welcome** (10 mins)
- 4:40 pm **Activity 1: Icebreaker - Building relationships** (30 mins)
- 5:10 pm **Activity 2: Tell us about Bell Block**
- 6:45 pm **Break** (15 mins)
- 7:15pm **Reflections** (10mins)
- 7:20pm **Next Steps** (10mins)
- 7:30pm **Finish**

Puketapu-Bell Block  
Community Board



NPDC



## House Keeping

- H&S
- Participation agreement





# What is spatial planning?

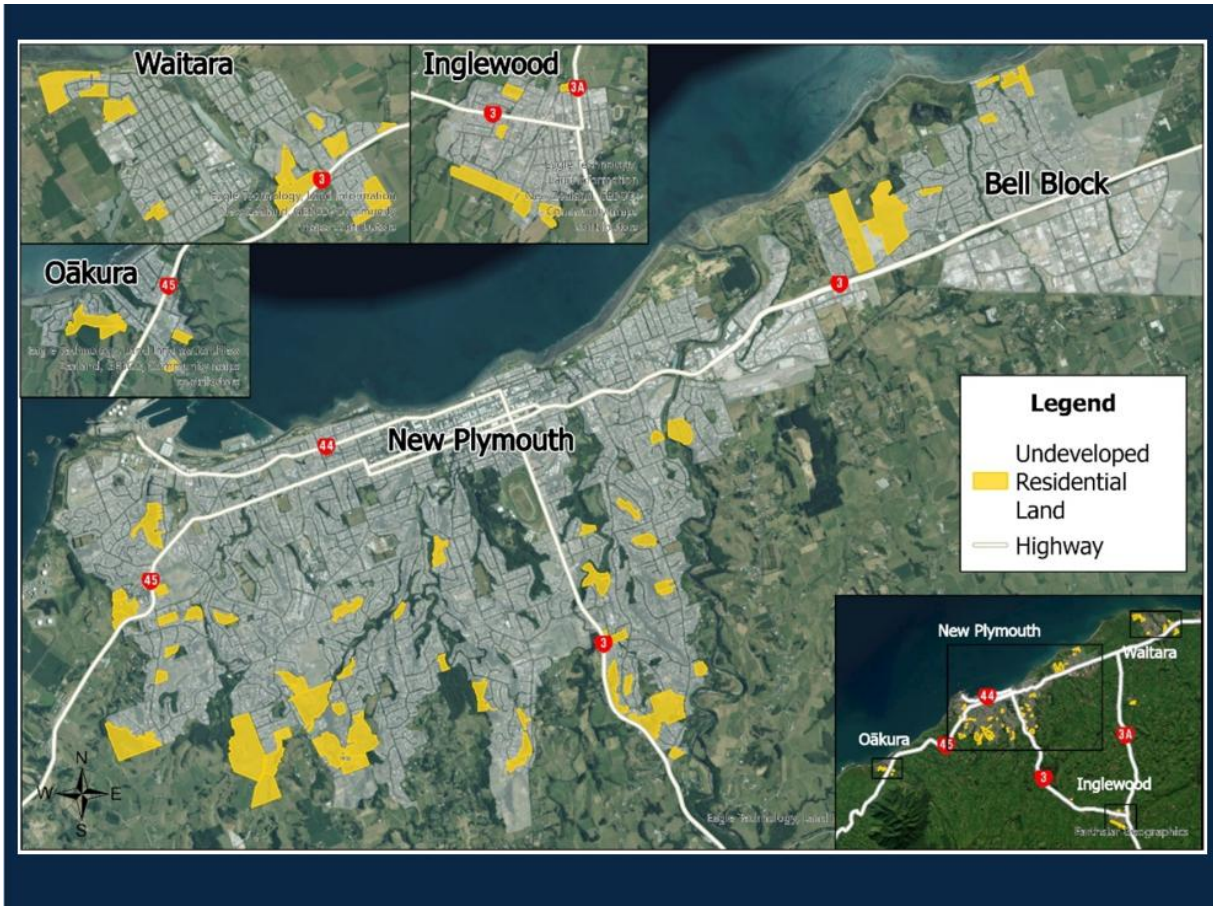
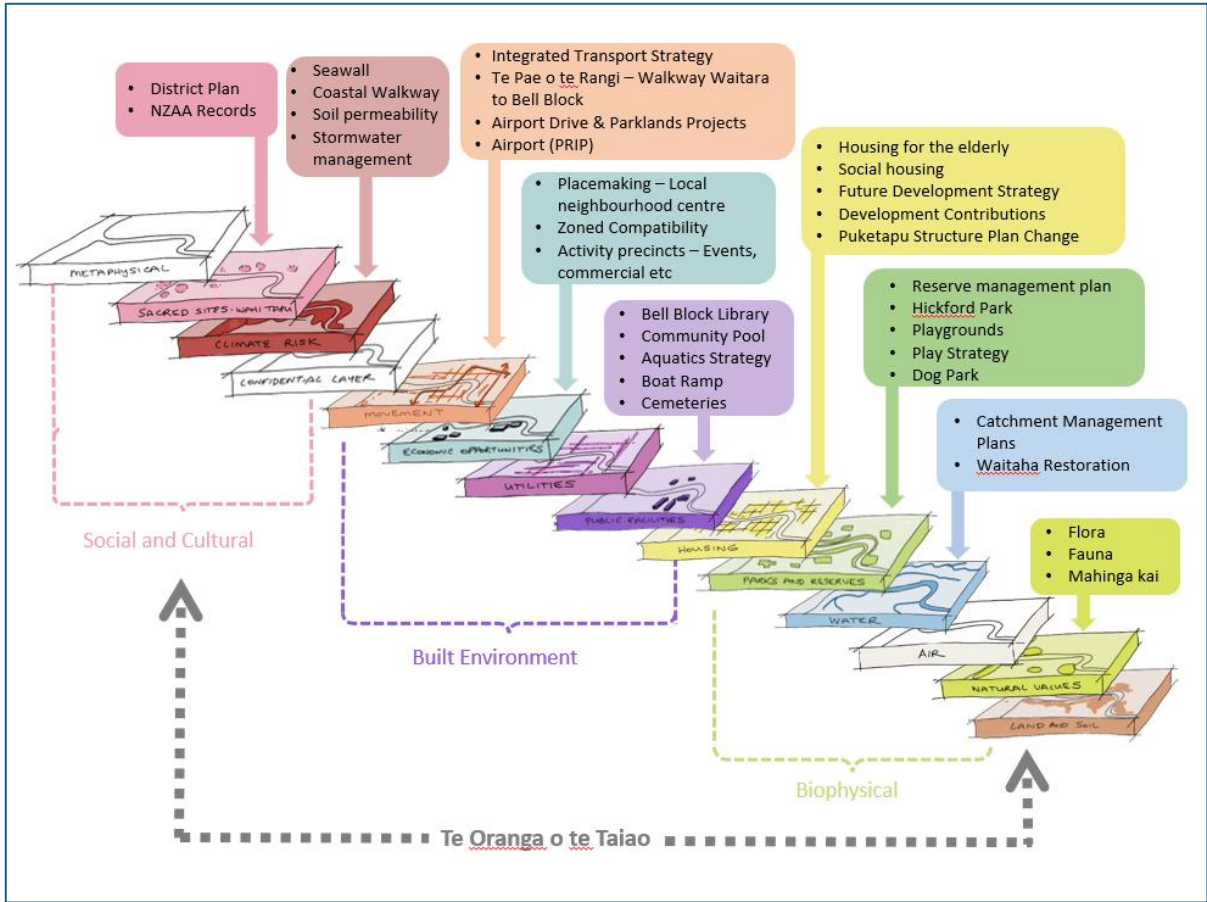
## What is spatial planning?



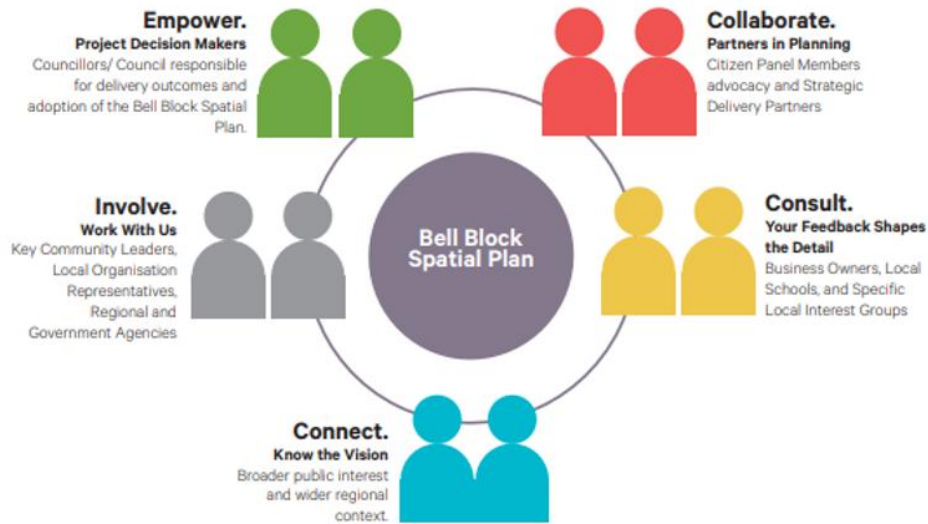
- A future plan for how a town should grow that is big picture focused.
- Shows preferred locations for future housing, parks, community facilities and transport
- Guides Council spending
- Supports funding bids to Central Government
- Highlights constraints and opportunities – hazards and engineering issues.



- A final decision on what will be built
- A list of projects that are automatically happening – we still need funding
- A rezoning plan for individual properties
- A green light for development
- Something decided behind closed doors
- A statutory plan

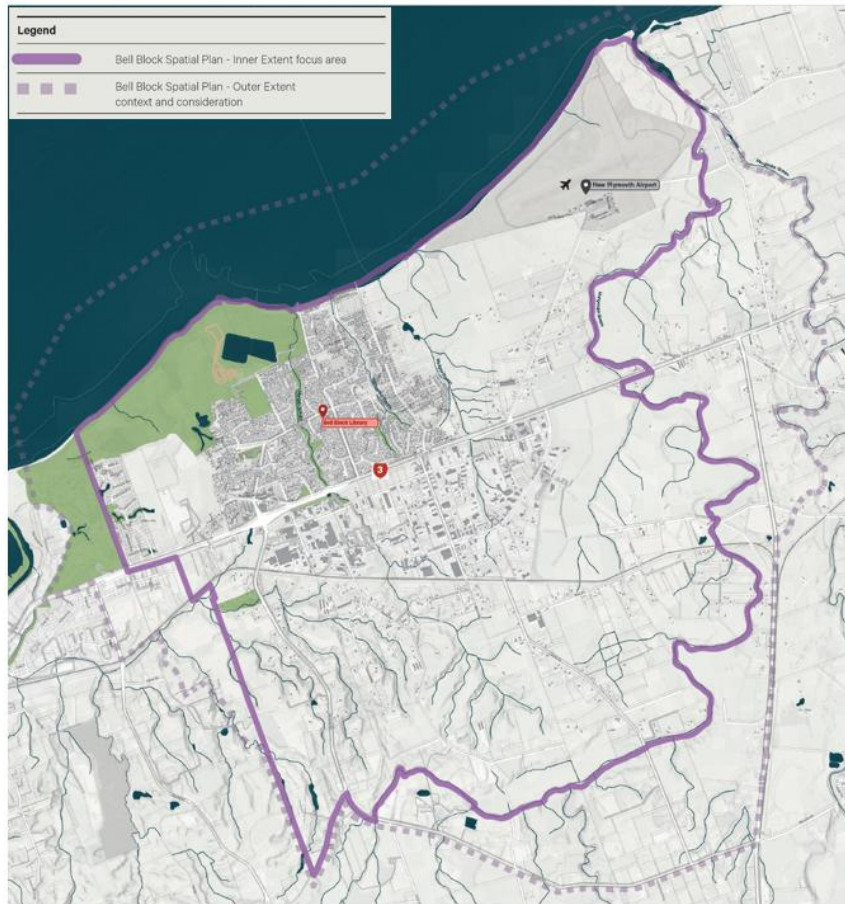


# How will we develop the draft spatial plan



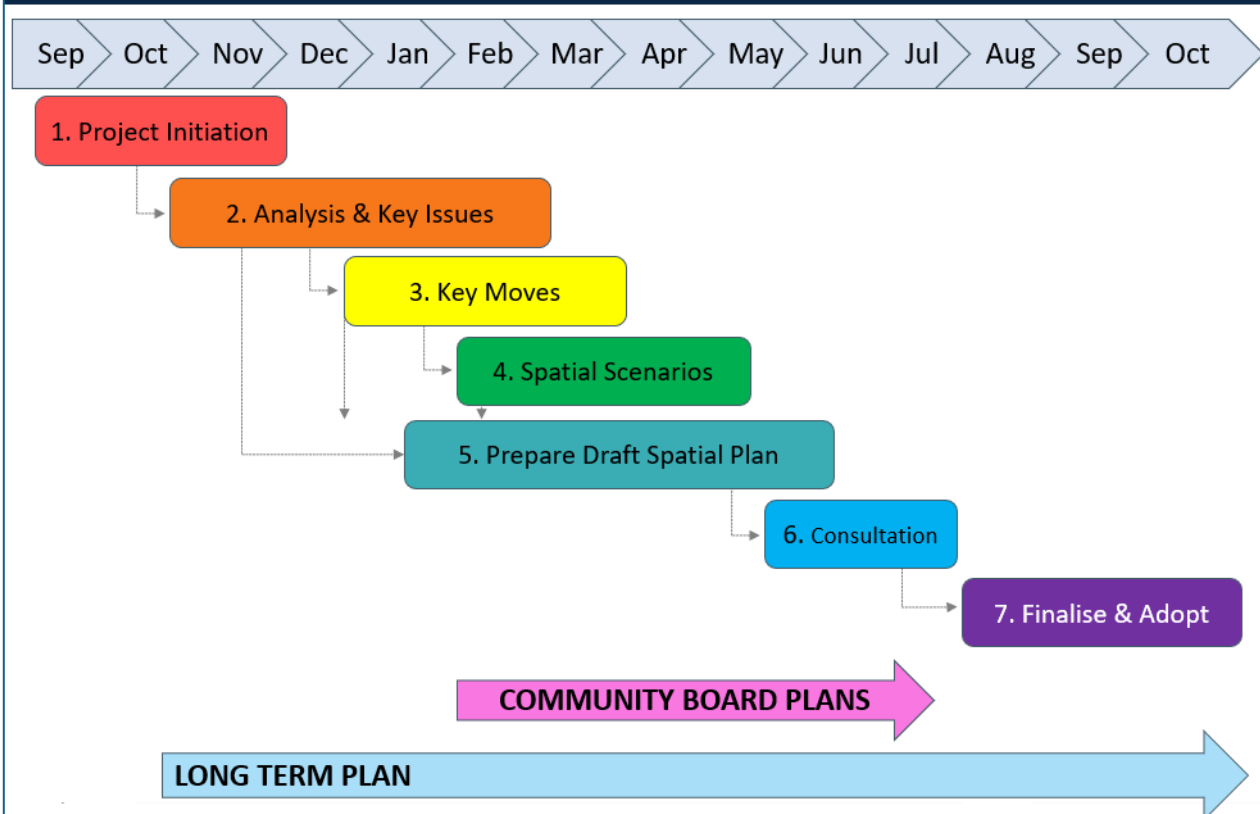
What is the focus area?

# Bell Block Spatial Plan Focus Area

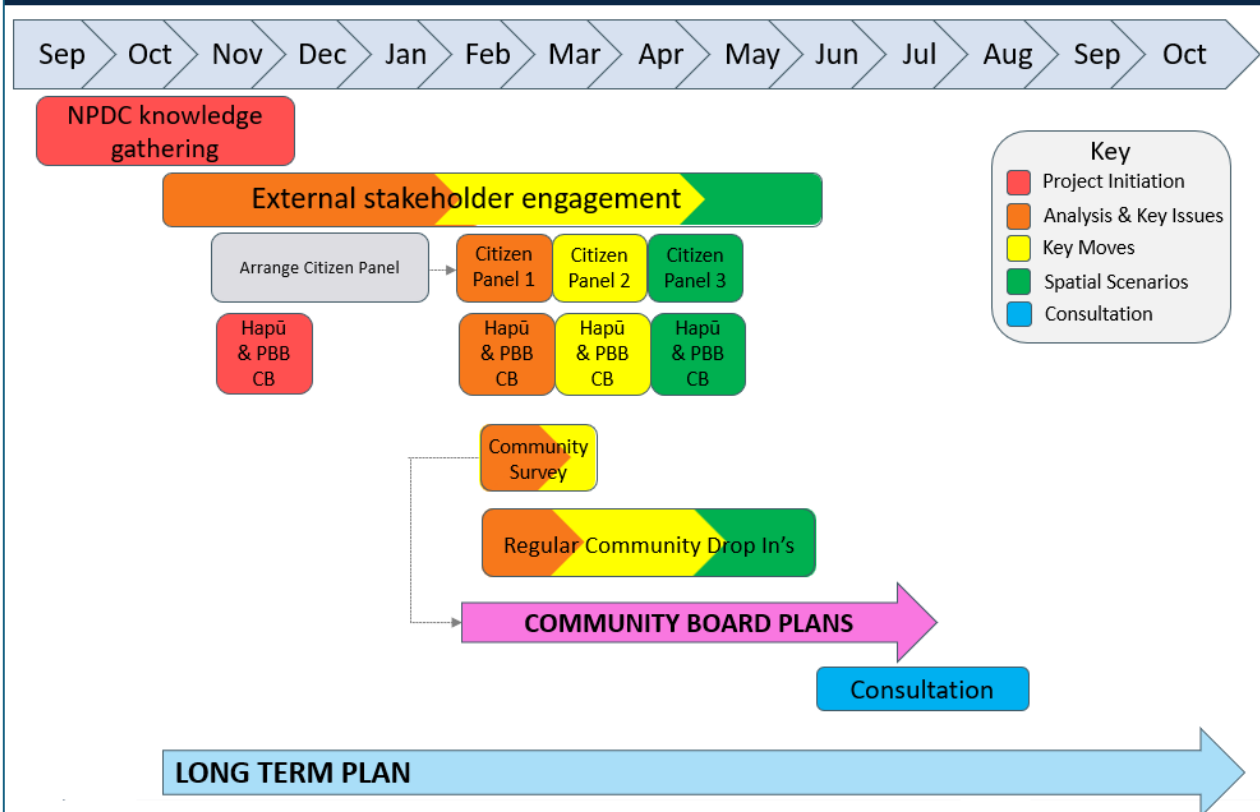


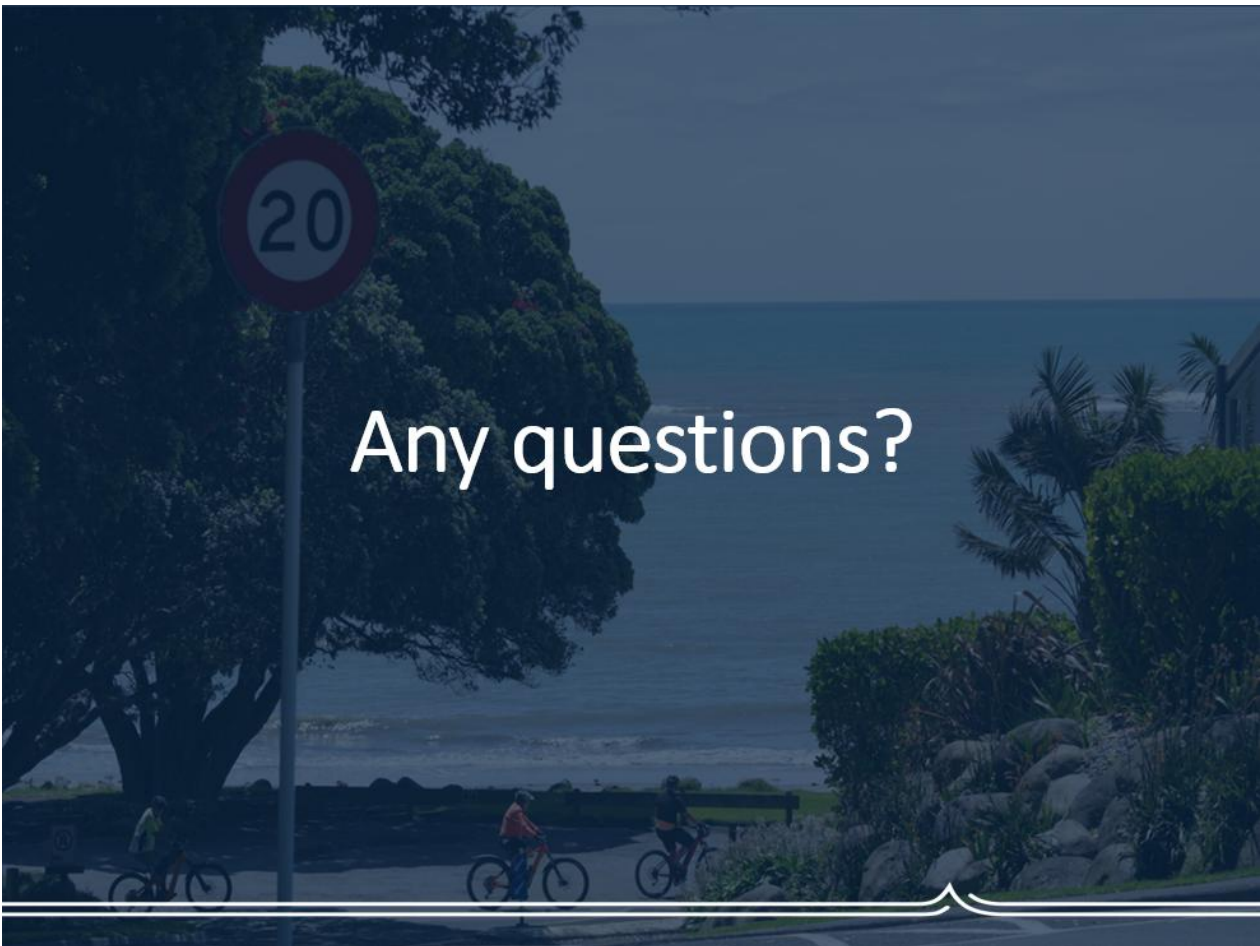
What is the project timeline?

# Project Schedule

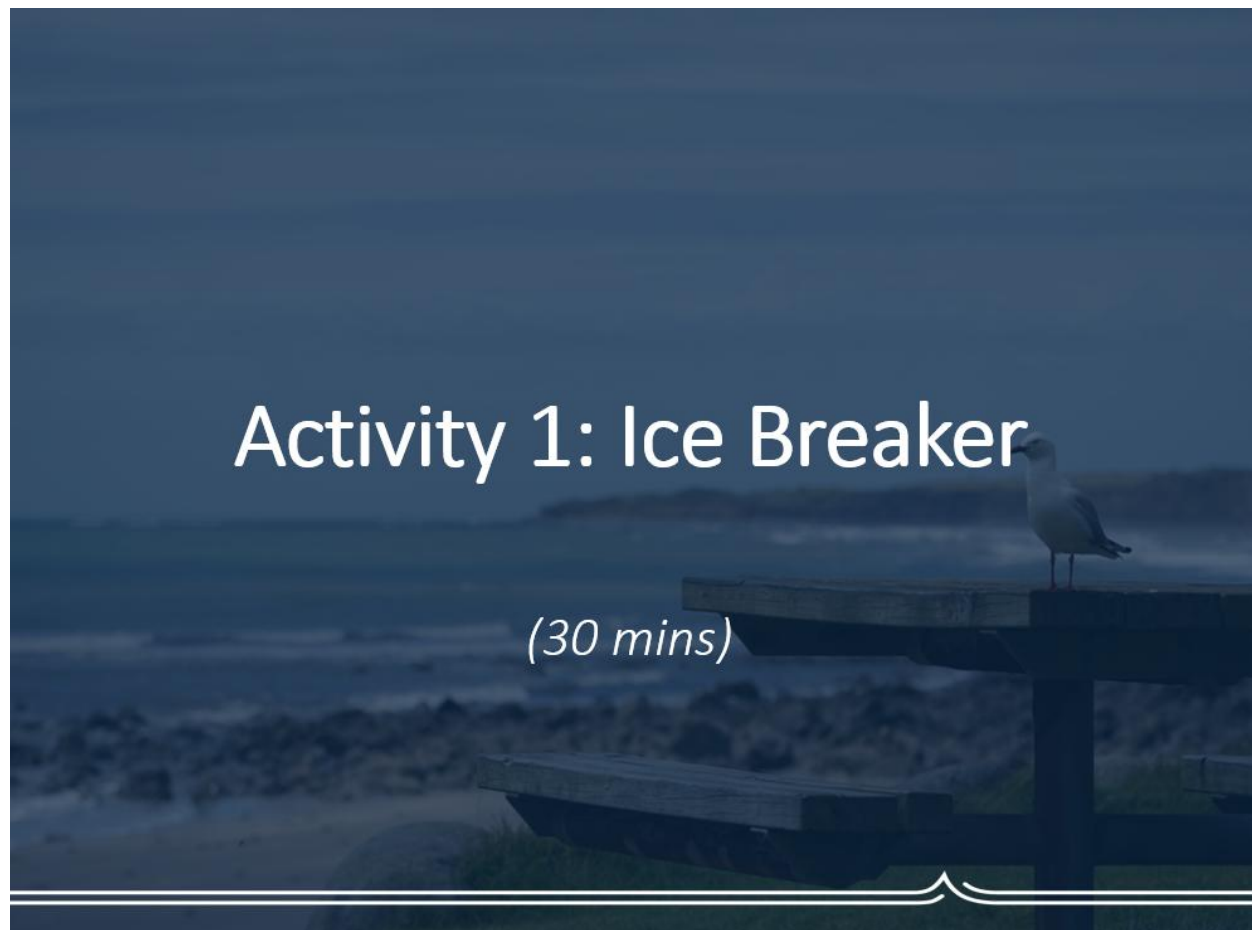


# Engagement Timelines





Any questions?



## Activity 1: Ice Breaker

*(30 mins)*

## Activity 1: Icebreaker – Building relationships

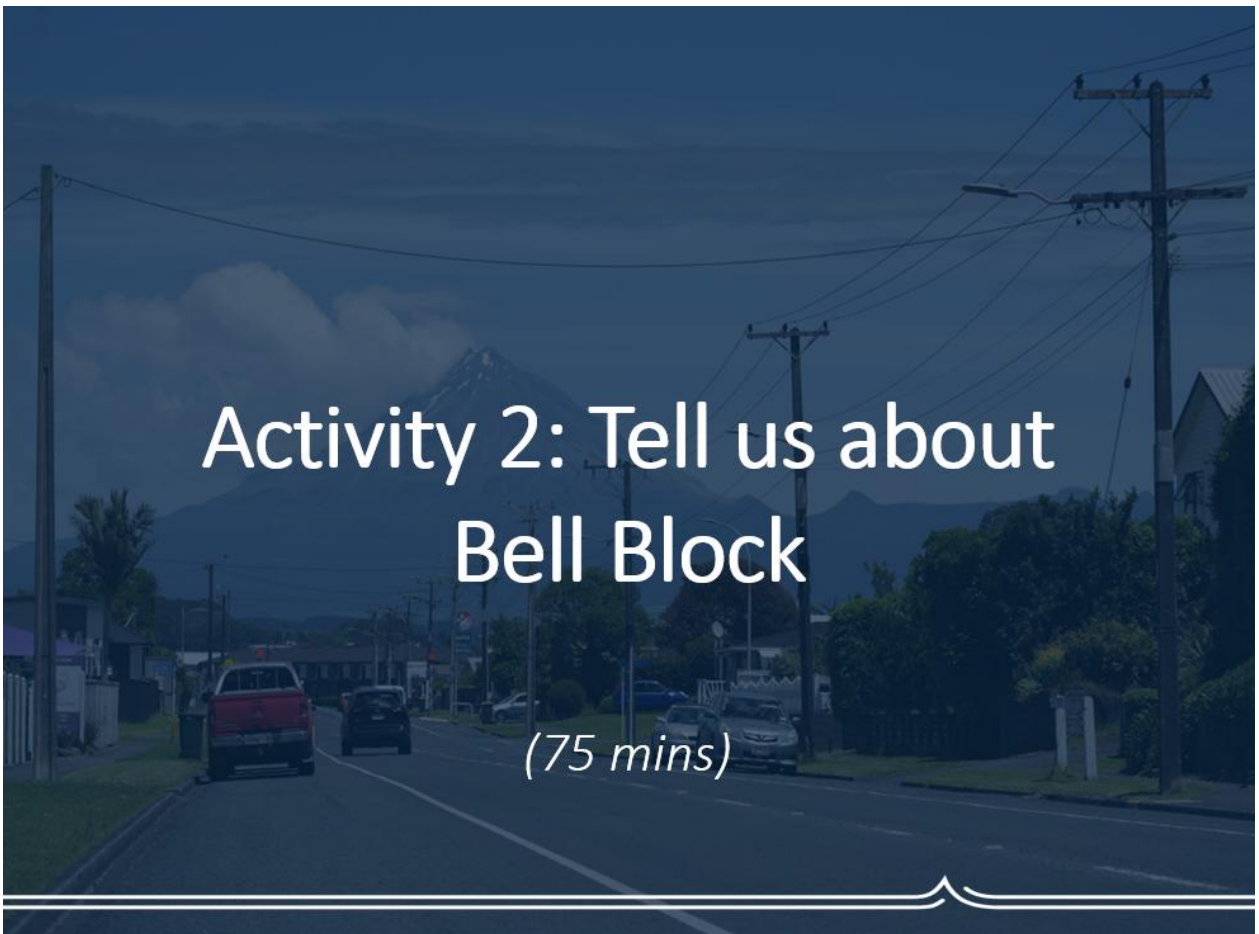
1. What's your name?
2. Why did you sign up with the Citizens Panel?
3. Your favourite thing about Bell Block?

Puketapu-Bell Block  
Community Board



## Activity 2: Tell us about Bell Block

*(75 mins)*



## Activity 2: Tell us about Bell Block

- Split into five groups and select a table.
- Each table will have different topics to give feedback on:
  1. Green Space and Water
  2. Housing a Community
  3. Links and Community Hubs
  4. Identity and Connectivity
  5. Employment and Innovation
- 15 mins approx. at each table
- Discuss, draw and add comments on each map
- Quick wrap up at the end of the activity



*Recap around the groups*

# Reflections and What's next?

*(5 mins)*

## What's next?

- Next workshop: Thursday 19 March
- Agenda:
  - What we've heard from stakeholders and project partners since we last met.
  - Discuss the vision and 'key moves' (bold actions).
  - Input and review growth scenarios.
  - Discuss possible projects that could support positive growth.

Puketapu-Bell Block  
Community Board



# What's next?

Puketapu-Bell Block  
Community Board

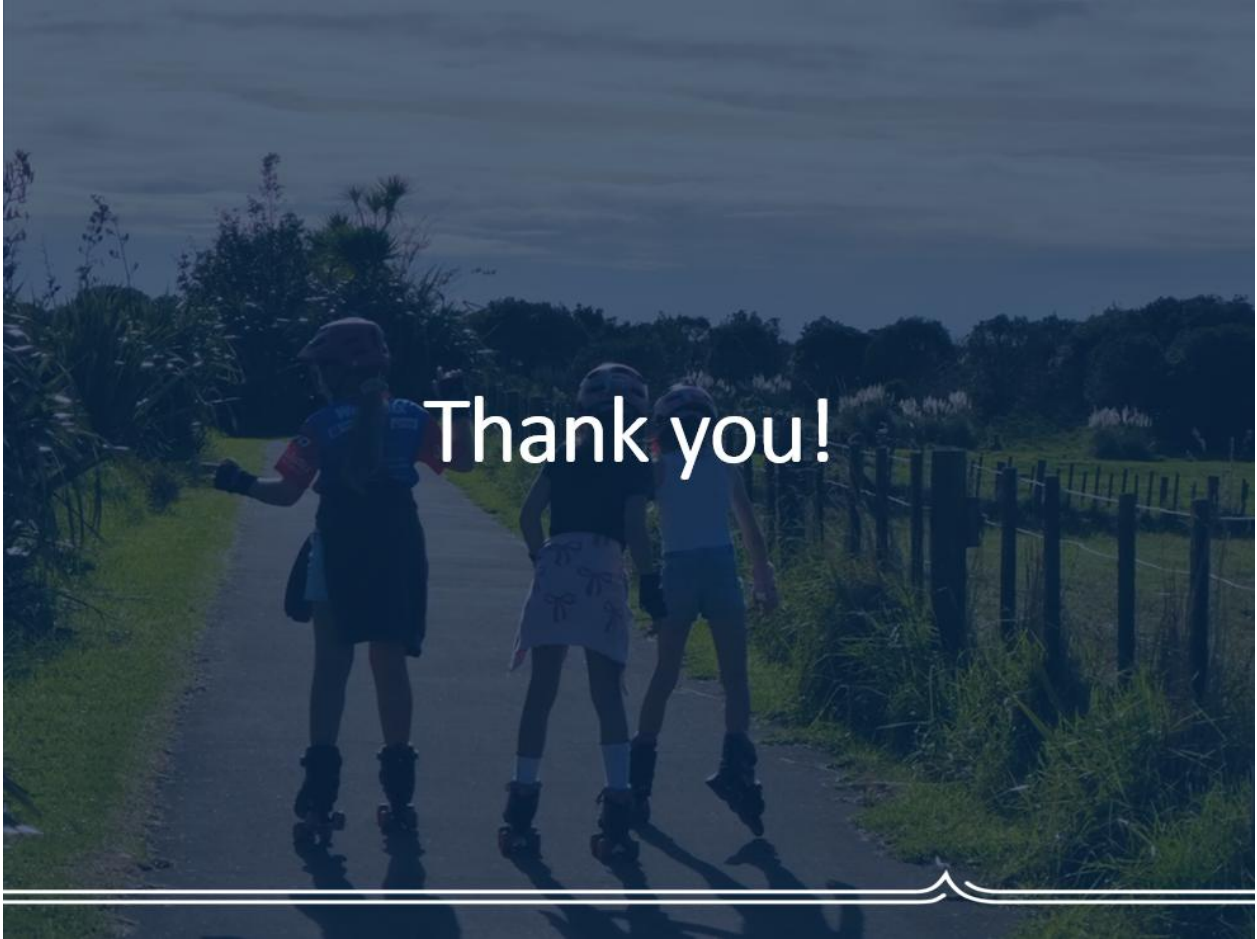


NPDC

- Project Team:
  - Summarise what we've heard from you today
  - Stakeholder discussions
  - Puketapu Hapū workshop
  - Puketapu-Bell Block Community Board workshop
  - Community survey



Any questions?



# Workshop #1 Prompt Cards

## Open spaces and our water

Our Rivers are important natural corridors and are used by the community to move around. How could connections like the Mangāti be expanded or improved.

With the coastal walkway extending past the airport and onto Waitara, what adjacent opportunities could be considered in Bell Block?

Coastal erosion is a known risk to property. How could we respond to this knowing the issues with sea walls and the need to be sensitive around wahi tapu sites?

Coastal erosion is a known risk to property. How could we respond to this knowing the issues with sea walls and the need to be sensitive around wahi tapu sites?

What areas do our waterways currently pass through before reaching the suburban part of Bellblock. Are there any opportunities or considerations?

How could Hickford Park sports fields serve a wider portion of the community all year round?

How could council land such as that currently grazed be used with greater levels of community amenity?

What might we not be addressing so far for this topic?

## Open spaces and our water

What might we not be addressing so far for this topic?



What should it be like to live around a future centre?



What is working and what isn't when it comes to new housing in Bell Block?



There is a range of houses built at different times in Bell Block. What could the next version of housing in Bell Block look like?



Who lives in Bell Block and why do people live here?



What public services will be needed to support an increase in population? (Schools, libraries, medical, supermarkets)



The new Puketapu Structure Plan Area will accommodate 749 houses, what else do we want to see in this area?



## Linking up the local hubs

How does Parklands Ave connect with other routes like the waterways or streets?

What changes would you make to accommodate a wider range of users?

To better service the area what sorts of business offerings could be required in the future. Is Parklands Ave the best location for these?

How do you currently move along Parklands Ave? What barriers are there or could be with more traffic?

Are there any notable landmarks, special places, or characteristics along Parklands Ave that need highlighting or protecting?

What amenity and activities would we like to see along parklands

What might we not be addressing so far for this topic?

## Identity and connectivity

What is special about Bell Block and how do we protect or enhance that into the future?

What is the experience of getting in and out of Bell Block as a local? Do you use Henwood Ave or another intersection?

What might we not be addressing so far for this topic?

How do both visitors and locals experience the connection between Bell Block and New Plymouth?

How could SH3 Corridor reach out to Bell Block more and draw people off the highway?

What are the visual landmarks seen arriving in Bell Block. Do we currently highlight any of them?

Where does the Bell Block begin and end? Egmont Road, Mountain Road, Waiongana Stream, Mangaoraka Stream?

Do we want to pull people in to Bell Block? If yes, what is the offering / what makes us special?

## Employment and innovation

Do you visit the industrial area and for what reason?

Who are the big employers in Bell Blocks industrial area?

In what ways does the community currently benefit from the industrial activity?

A number of the employees of this area live outside of Bell Block and commute, should more employment come from the township?

Things like GPs have moved south of SH3. How do we feel about more things moving across the highway?

What are the pinch points for access to the industrial area?

What might we not be addressing so far for this topic?

# Questions from Citizen Panel

1. When will Council owned leased grazing land come up to renewal in Bell Block?

Question to be answered at Workshop #2

# Workshop #1 Supporting Information

1. NZTA – Urban Connectors: Examples of what these types of Roads look like
2. Venture Taranaki - Taranaki Statistics
3. NPDC Puketapu Structure Plan Change Area – The new planned neighbourhood between Wills Road and Airport Drive (along the new Parklands Extension).
4. NZTA De Havilland Drive/Airport Drive roundabout

## Urban Connectors



**Typical street width: varies (18 - 20m depicted)**

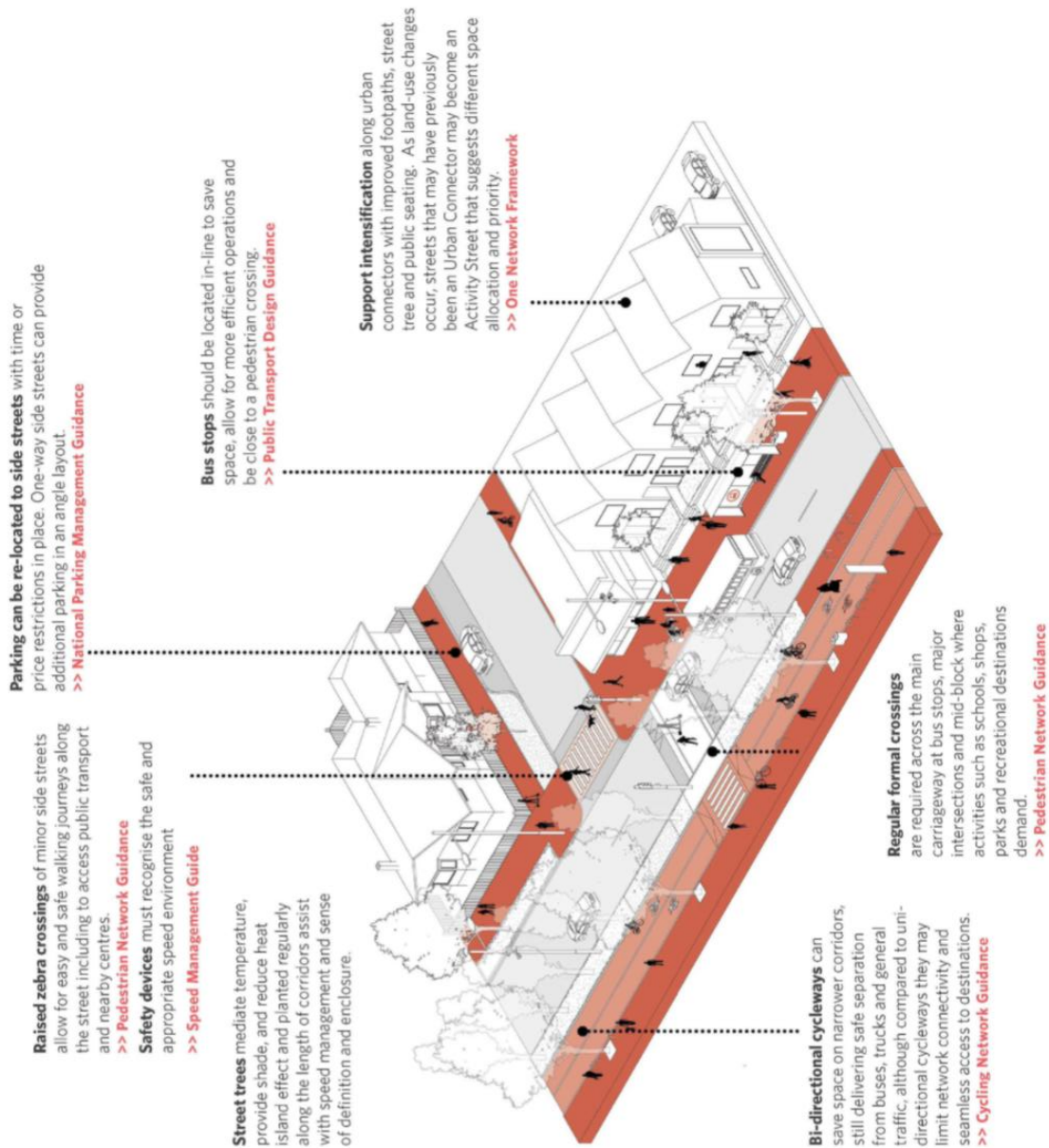
**Typical speed limit: 40 -60km/h**

**Typical land use context: residential and neighbourhood shops**

Connectors are long, contiguous streets that have higher levels of vehicle traffic. Their access function is typically less intense than the mains streets they lead into.

### Network and operations guidance

- Where adjacent land uses support transitioning connector streets to more place-focused activity streets and people-friendly places they provide the opportunity for additional local serving business and public places, even for short stretches or local spots such as outside neighbourhood shops or parks.
- Reducing traffic, lowering traffic speed limits to 40-60km/h, and improving public transport may stimulate urban regeneration and higher quality, more engaging urban development on sites adjacent urban connectors.
- Connector streets are movement focused though they should not sever communities or be a barrier to public transport access. Where possible long-distance traffic should be reduced by re-routing vehicle traffic away from the connector and onto highways.
- General parking should be removed minimised and managed by timing or pricing. Kerbside activity can be managed in different ways across the day to provide for peak period bus lanes for example.
- Service and delivery parking are located close to destinations but in places that do not compromise walking paths or cycleways.
- Versions of this street type can be delivered in tactical or incremental ways saving time and money from a complete streetscape upgrade.



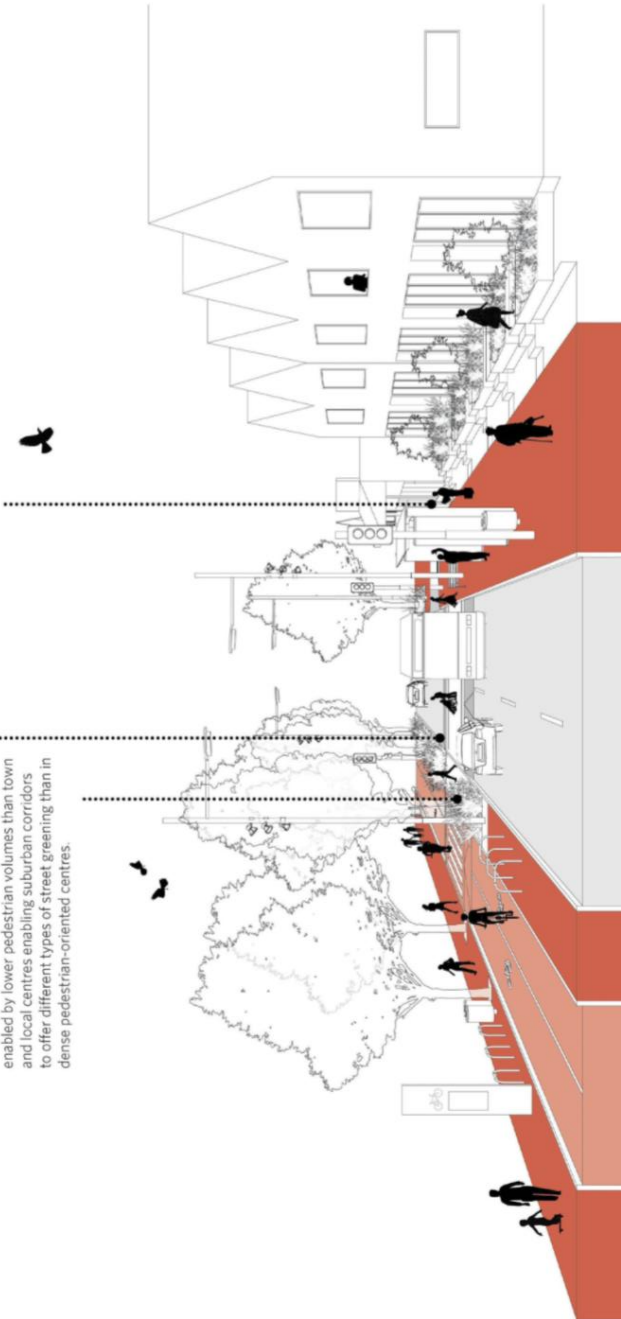
Illustrations and associated guidance are indicative only.

## NZTA – Urban Connectors (continued)

**No parking** on narrow urban connectors to minimise carriageway width and prioritise traffic flow functions for urban connector routes while creating space for cycleways, bus stops, trees and planting in ways that don't impinge on pedestrian environment.  
**>> National Parking Management Guidance**

**Grass berms, rain gardens or low planting** are enabled by lower pedestrian volumes than town and local centres enabling suburban corridors to offer different types of street greening than in dense pedestrian-oriented centres.

**Two traffic lane allocation** solutions on narrower urban connectors where street space is limited, help provide wider footpath space for bus stops, street trees, and where activity supports, bench seating and outdoor dining / street trading, in ways that best support local shops and businesses while not impeding pedestrian movement.  
**>> Pedestrian Network Guidance**



## Urban Connectors

### Diversifying the street category

Within any given One Network Framework street category, there is more than one integrated street solution. These pages provide indicative examples of the sorts of differentiated design responses to be explored through option development, as well as examples of similar street types from Aotearoa and around the world. This is intended to demonstrate that there's a diverse range of street types and integrated street design solutions possible within the broad umbrella of each ONF Street Category.



A range of potential integrated street solutions, to be explored through option development, for example



#### Cycling priority

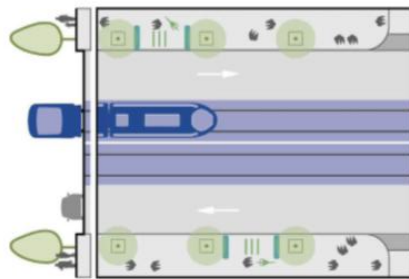
Priorities:



Safe and appropriate speed limit:

Key features:

- Separated cycleways and safe, separated crossings for people on bikes and two wheels
- Bus volumes do not require dedicated bus lanes
- Enables safe, separated cycling movement along strategic corridors
- Provides for high volumes of through movement by cyclists
- Supports local origins and destinations through on-street bicycle parking and end of trip facilities.



#### MRT corridor

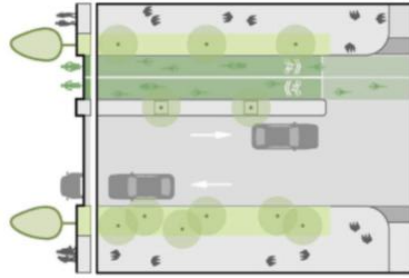
Priorities:



Safe and appropriate speed limit:

Key features:

- Prioritises the most space efficient modes to move high volumes of people across the urban area
- Removes on-street parking and slip lanes, simplifies intersections
- Supports local pedestrian movement and crossings where appropriate
- Integrates landscape treatments that provide a buffer to adjacent land uses and improve urban amenity.



#### Green cycling street

Priorities:



Safe and appropriate speed limit:

Key features:

- Prioritises active transport through separated off-street cycling facilities
- Provides green buffers between vehicles and people walking and cycling
- Enhances native ecology through continuous green connections
- Infill planting to create low-maintenance/high-amenity corridors.

## Urban Connectors

### Diversifying the street category

Within any given One Network Framework street category, there is more than one integrated street solution. These pages provide indicative examples of the sorts of differentiated design responses to be explored through option development, as well as examples of similar street types from Aotearoa and around the world. This is intended to demonstrate that there's a diverse range of street types and integrated street design solutions possible within the broad umbrella of each ONF Street Category.



A range of potential integrated street solutions, to be explored through option development, for example

#### Cycling priority



**Local examples:**

- Mascot Avenue, Mangere, Auckland

#### MRT corridor



**Local examples:**

- Future Auckland MRT
- Future Wellington MRT

#### Green cycling street



**Local examples:**

- Linwood Avenue, Ōtautahi Christchurch
- Cumberland Street, Ōtepoti Dunedin



**Global examples:**

- Dunsmuir Street, Vancouver, Canada



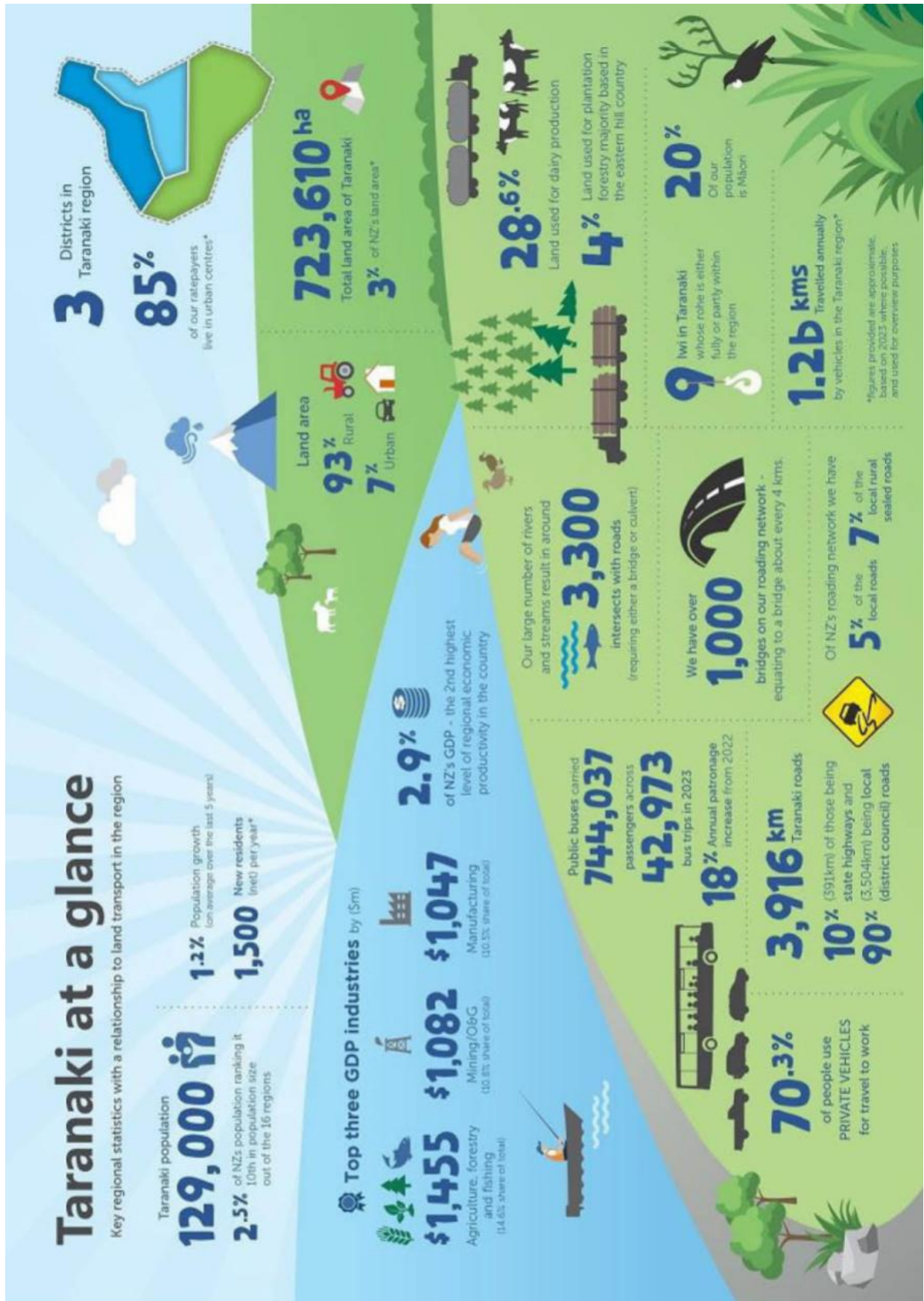
**Global examples:**

- Devonshire Street, Surry Hills, Sydney Australia



**Global examples:**

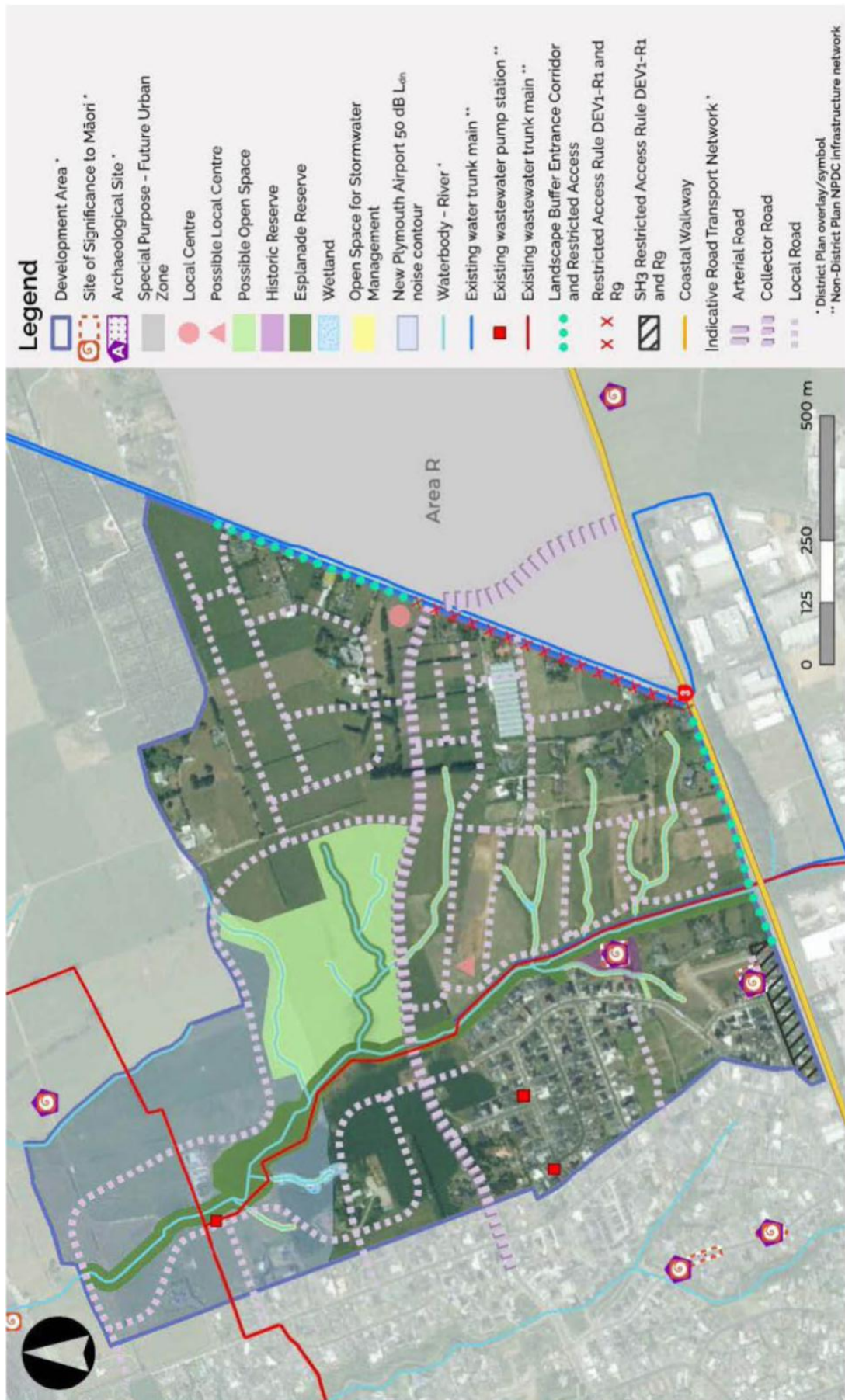
- Bourke Street, Surry Hills, Sydney Australia



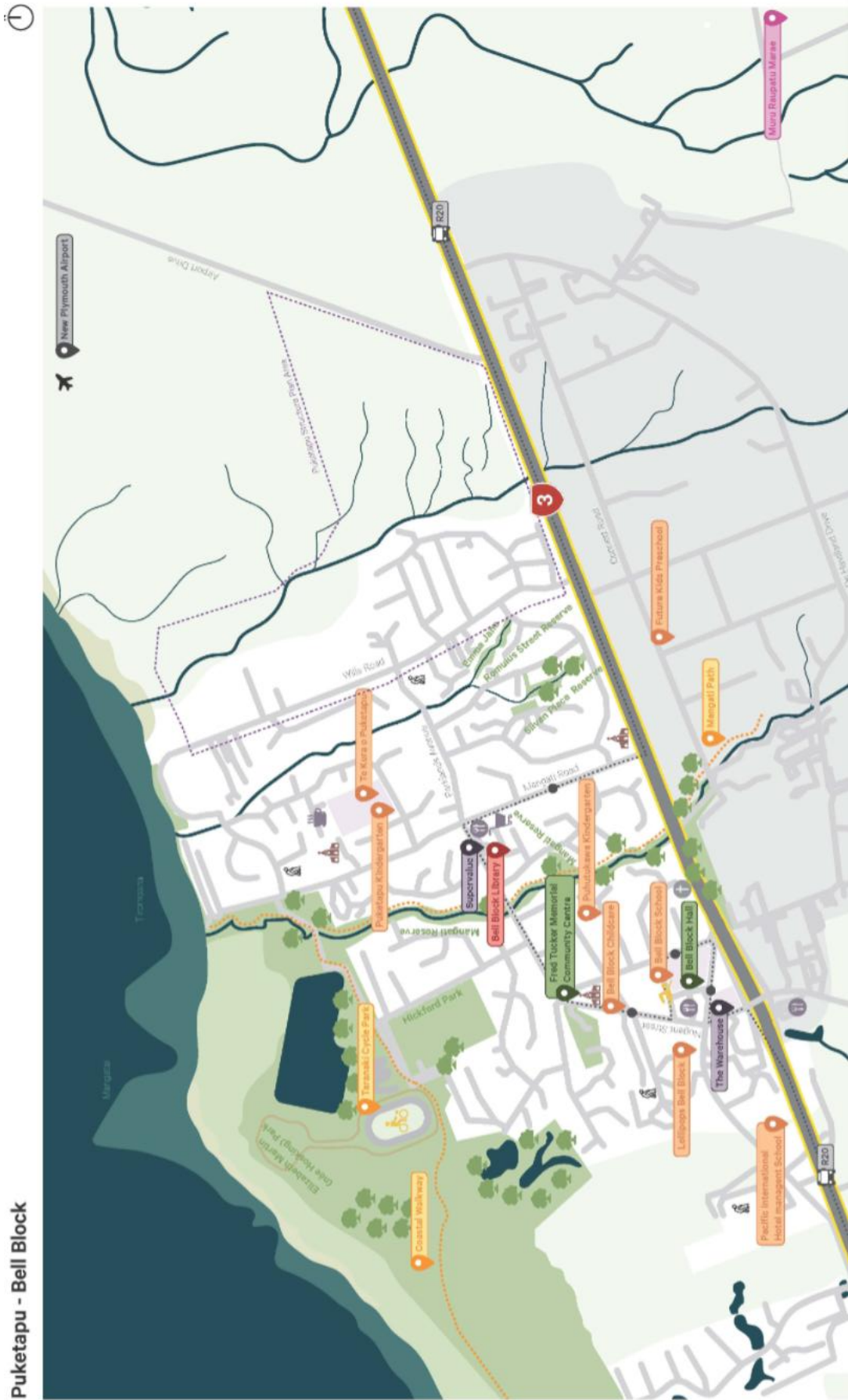
## NZTA De Havilland Drive/Airport Drive Roundabout



# NPDC Puketapu Structure Plan Development Area – Future Development Strategy



# Bell Block Spatial Plan - Bell Block Map



Puketapu - Bell Block

# Bell Block Spatial Plan - Aerial



Puketapu - Bell Block Aerial



Te Kaunihera-ā-Rohe o Ngāmotu

**New Plymouth  
District Council**



## **Appendix 4: Bell Block Spatial Plan Project Partners**

This appendix will be updated as information becomes available.



Te Kaunihera-ā-Rohe o Ngāmotu

**New Plymouth  
District Council**

